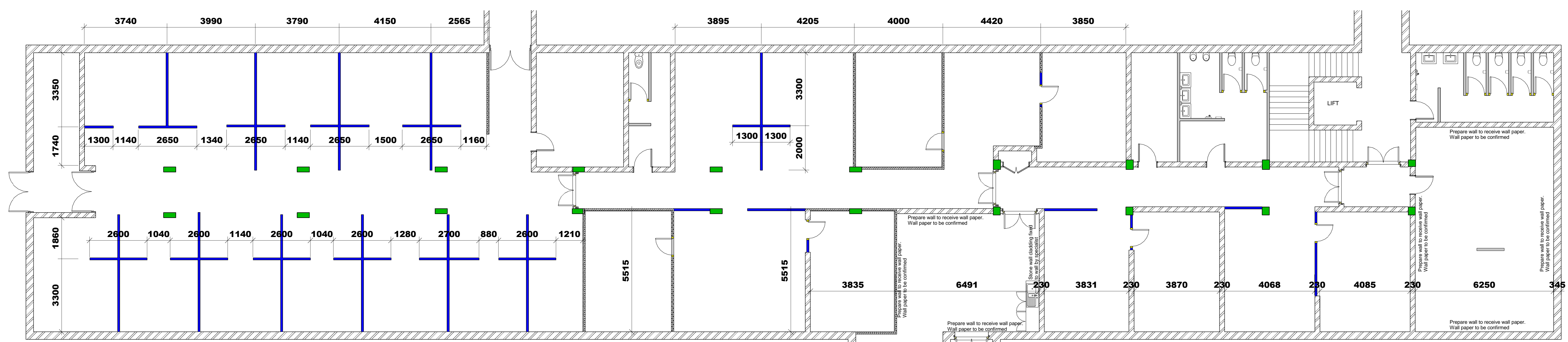
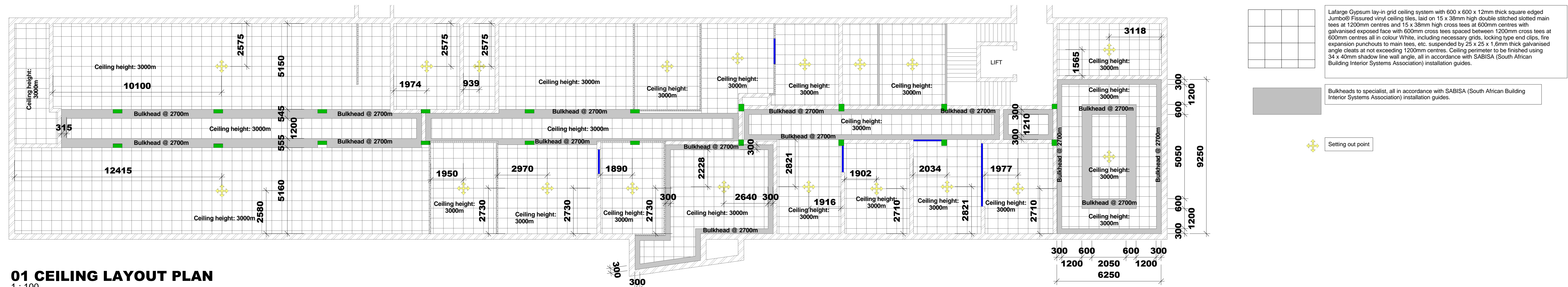


01 GROUND FLOOR PLAN
1 : 75



03 DRYWALL PARTITIONING
1 : 75



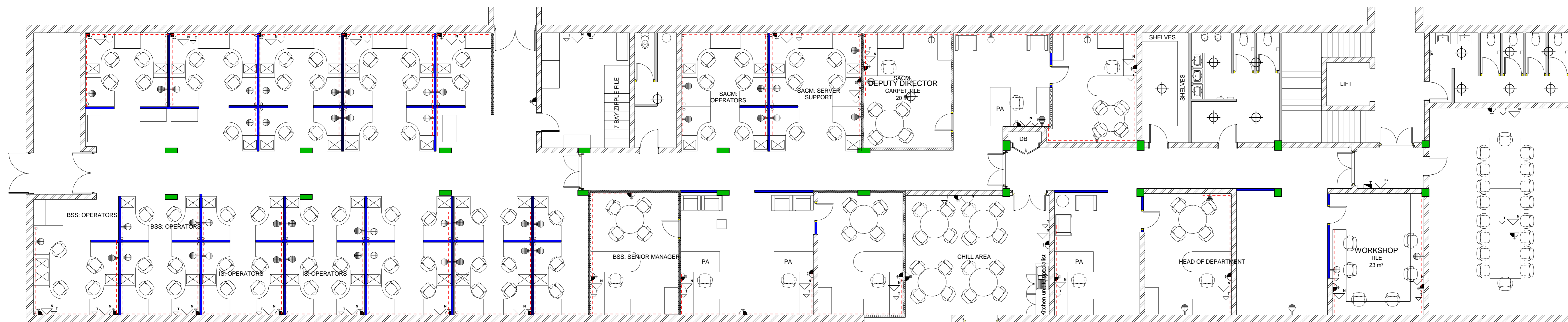
01 CEILING LAYOUT PLAN
1 : 100

pdf file name
REVIT 2015



MMHMA BUILDING AND PROJECTS 1 cc
100011001
Contact: Thabane
Cell: 073 263 3690
Email: thabane@gmail.com

ARCHITECTURE	
service	PROPOSED NEW OFFICE LAYOUT FOR GPA
drawing title	BLOCK H-IT GROUND FLOOR PLAN DRY WALL PARTITIONING CEILING LAYOUT
rev no	designer TS
scale	drawn TS
date	checked
type number	rev
drawing number	100

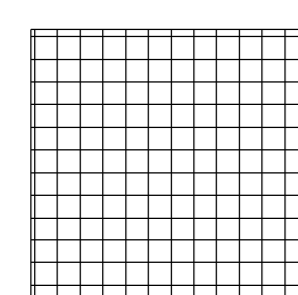
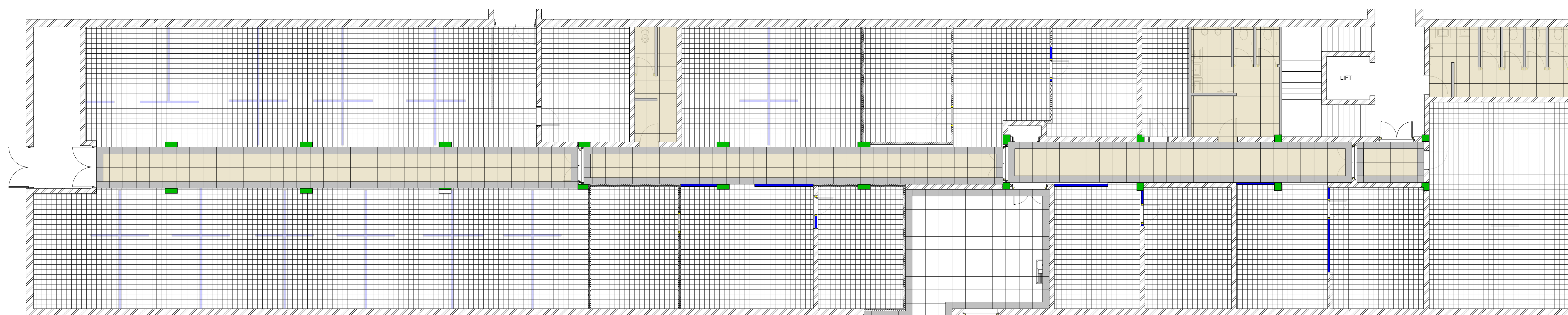


04 ELECTRICAL LAYOUT

1 : 75

	TELEPHONE BOARD		BIOMETRIC READER
	DOUBLE PLUG POINT 16AMP @ 250mm		POP-UP IN DEST CONSIST OF: 2X NORMAL(WHITE) PLUGS 2X DEDICATED(RED) PLUGS 1X DATA POINT 1X 2-PIN EURO PLUG
	DISTRIBUTION BOARD		
	TELEPHONE POINT		
	NETWORK DATA POINT		
	NEW 3 CHANNEL P/SKIRTING INSTALLED AT FLOOR LEVEL		

Note: While the electrical reticulation is indicated on the electrical drawings, the detail design (including the selection of cable thicknesses, materials and components) will be done by a competent and suitably qualified electrical contractor on a design and supply and install basis. The contractor indemnifies the architect against claims which may arise out of the design of the electrical installation. A certificate of compliance must be issued before practical completion can be certified.



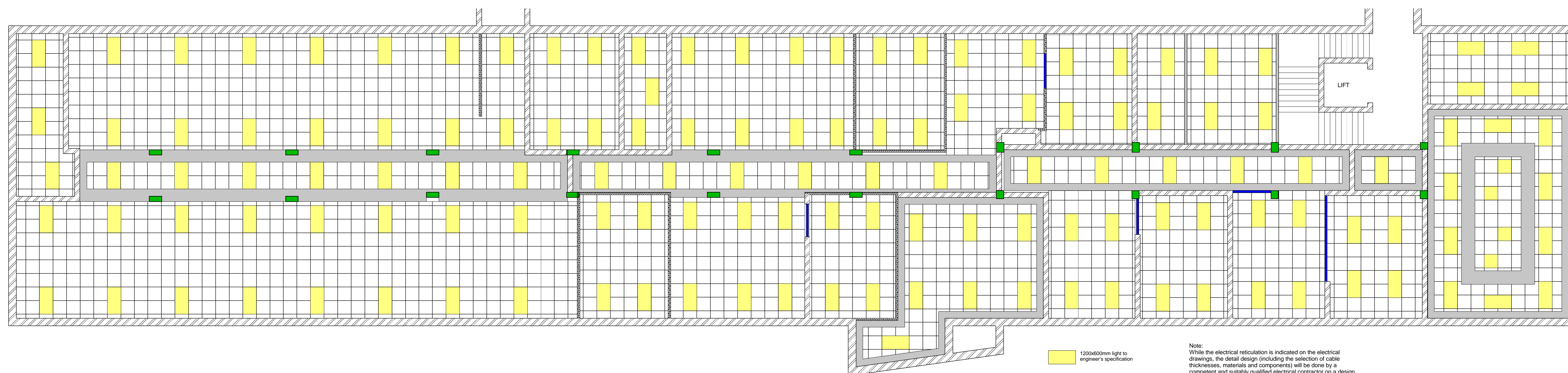
Carpeting: Van Dyck Florpoint Everglade medium commercial (SABS use class U4), 100% Polypropylene, needlepunch carpet tiles, size 600 x 600 x 8mm thick weighing 4250g/m², with non-woven EnduroBack K949 lossaly tile backing, treated with Stain Shield Fibre® soil resistant treatment. Laid in accordance with SANS 1415:2000, all installed by approved installer in accordance with SANS 10186:2000 and the recommended adhesive applied in accordance with the adhesive manufacturer's application instructions.

Border Tile: Black Porcelain tiles, size 600 x 600mm fixed to 25mm thick Class II mortar screed internal floors with white tile adhesive (elsewhere specified) applied with a notched trowel to a minimum bedded thickness of 3mm with 2mm joints continuous in both directions, grout the following day with flexible grout (elsewhere specified), excess grout on the surface to be cleaned with water as the work proceeds.

Border Tile: Beige Porcelain tiles, size 600 x 600mm fixed to 25mm thick Class II mortar screed internal floors with white tile adhesive (elsewhere specified) applied with a notched trowel to a minimum bedded thickness of 3mm with 2mm joints continuous in both directions, grout the following day with flexible grout (elsewhere specified), excess grout on the surface to be cleaned with water as the work proceeds.

05 FLOOR LAYOUT

1 : 75



- 1200x600mm light to engineer's specification
- 600x600mm light to engineer's specification

Note: While the electrical reticulation is indicated on the electrical drawings, the detail design (including the selection of cable thicknesses, materials and components) will be done by a competent and suitably qualified electrical contractor on a design and supply and install basis. The contractor indemnifies the architect against claims which may arise out of the design of the electrical installation. A certificate of compliance must be issued before practical completion can be certified.

02 LIGHTING LAYOUT

1 : 75

proj file name
REVIT 2015



ARCHITECTURE

service
PROPOSED NEW OFFICE
LAYOUT FOR GPAA

drawing title

BLOCK H - JT
ELECTRICAL LAYOUT
CEILING LAYOUT
LIGHTING LAYOUT

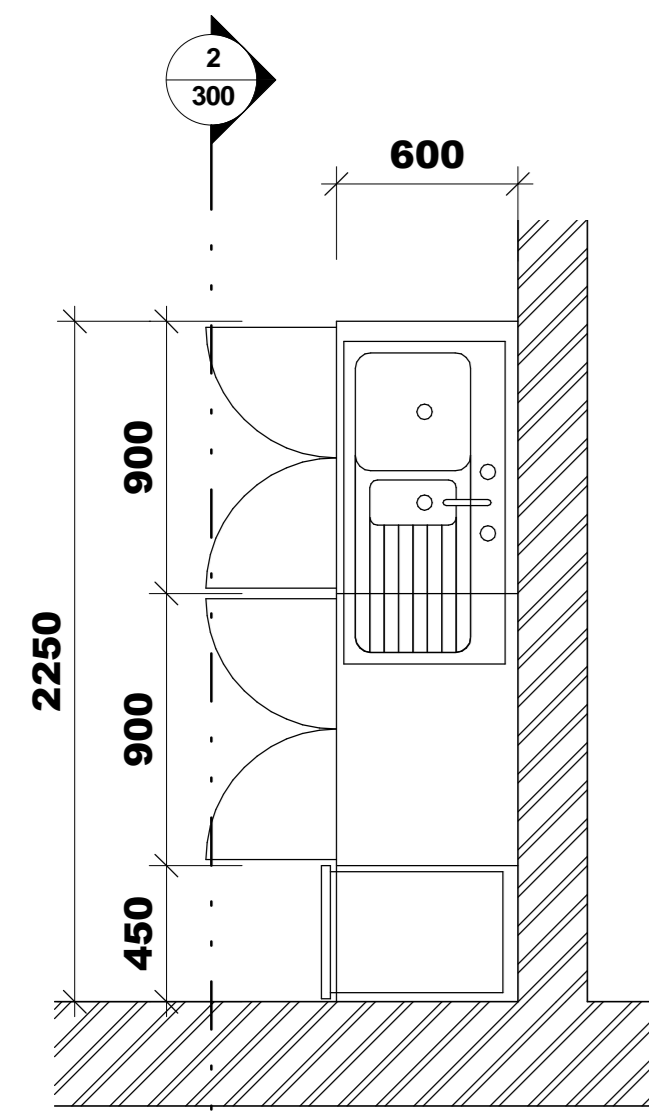
ref. no. designed M.S.

scale 1 : 75 drawn M.S.

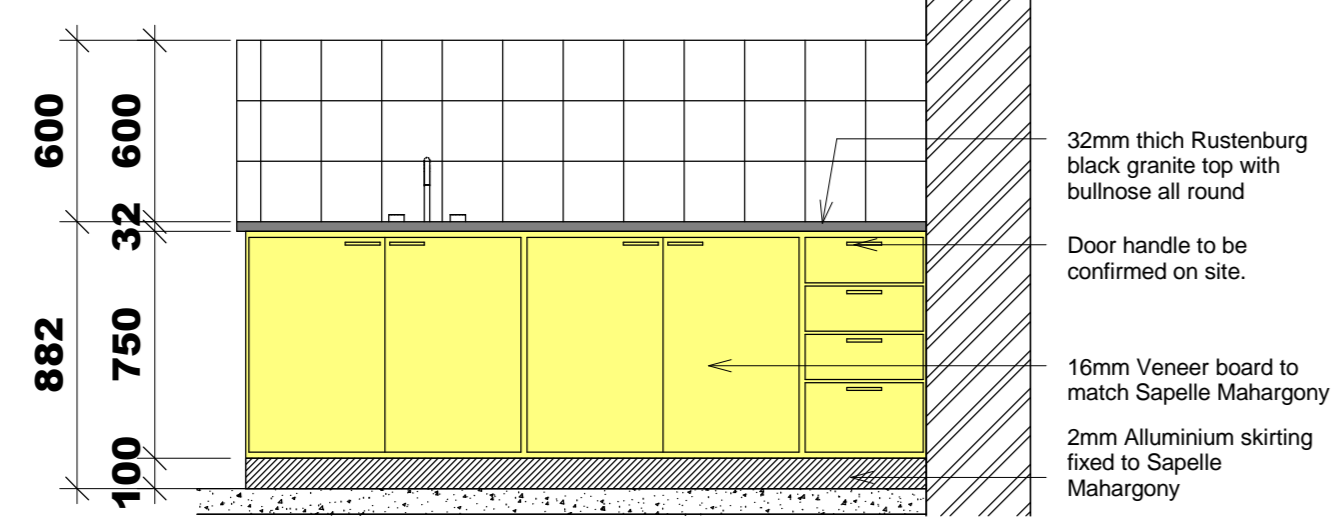
date 2015/03/12 07:31 AM checked NDM

type number

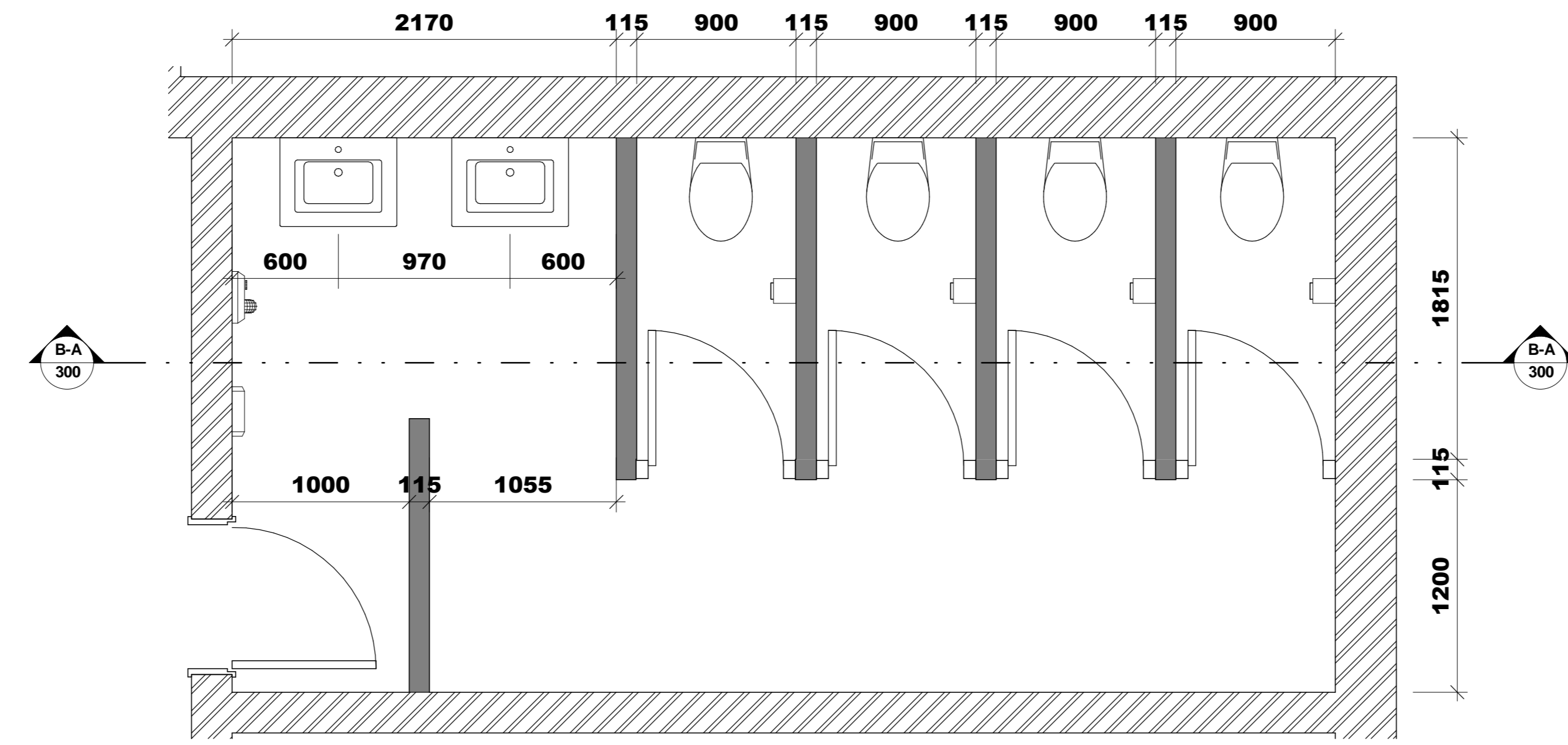
drawing number
200



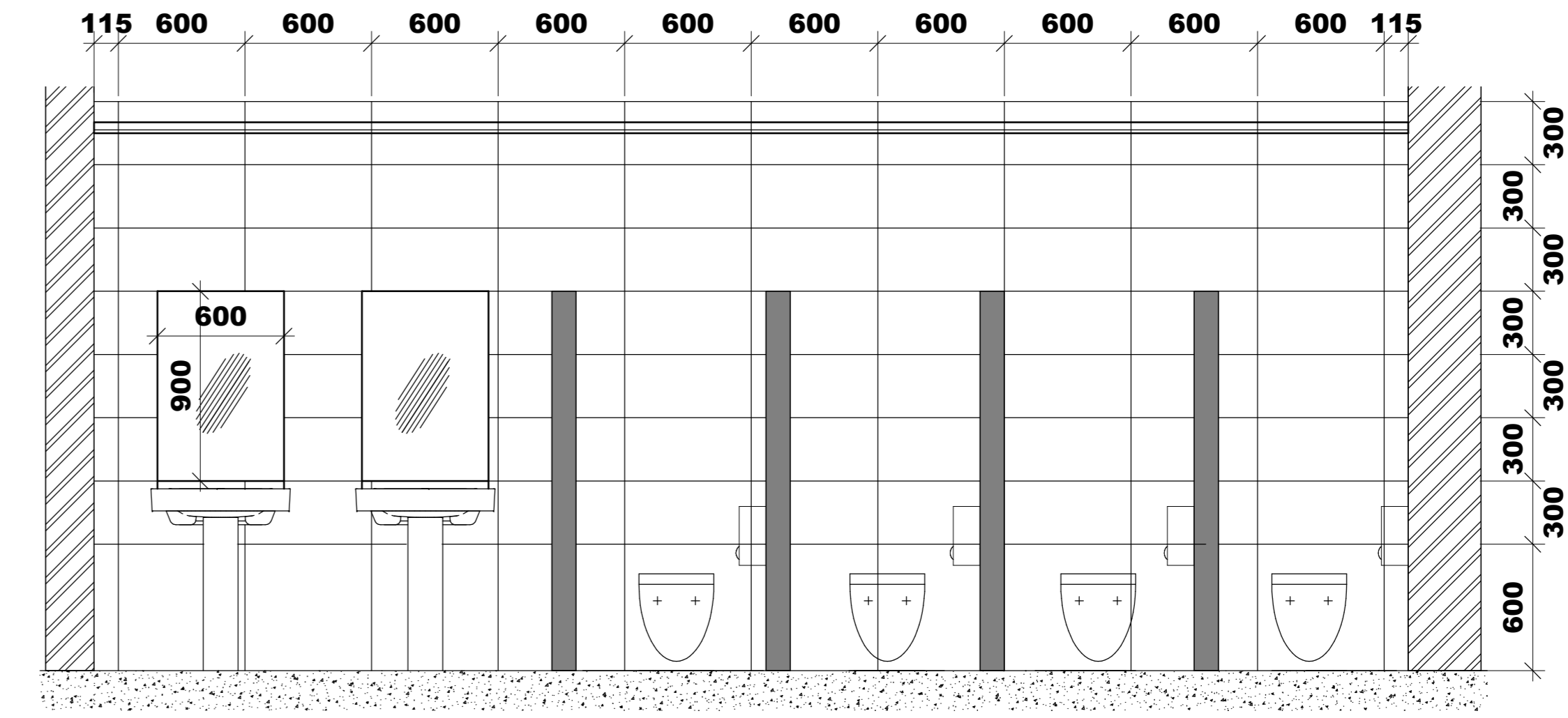
CHILL AREA
1 : 25



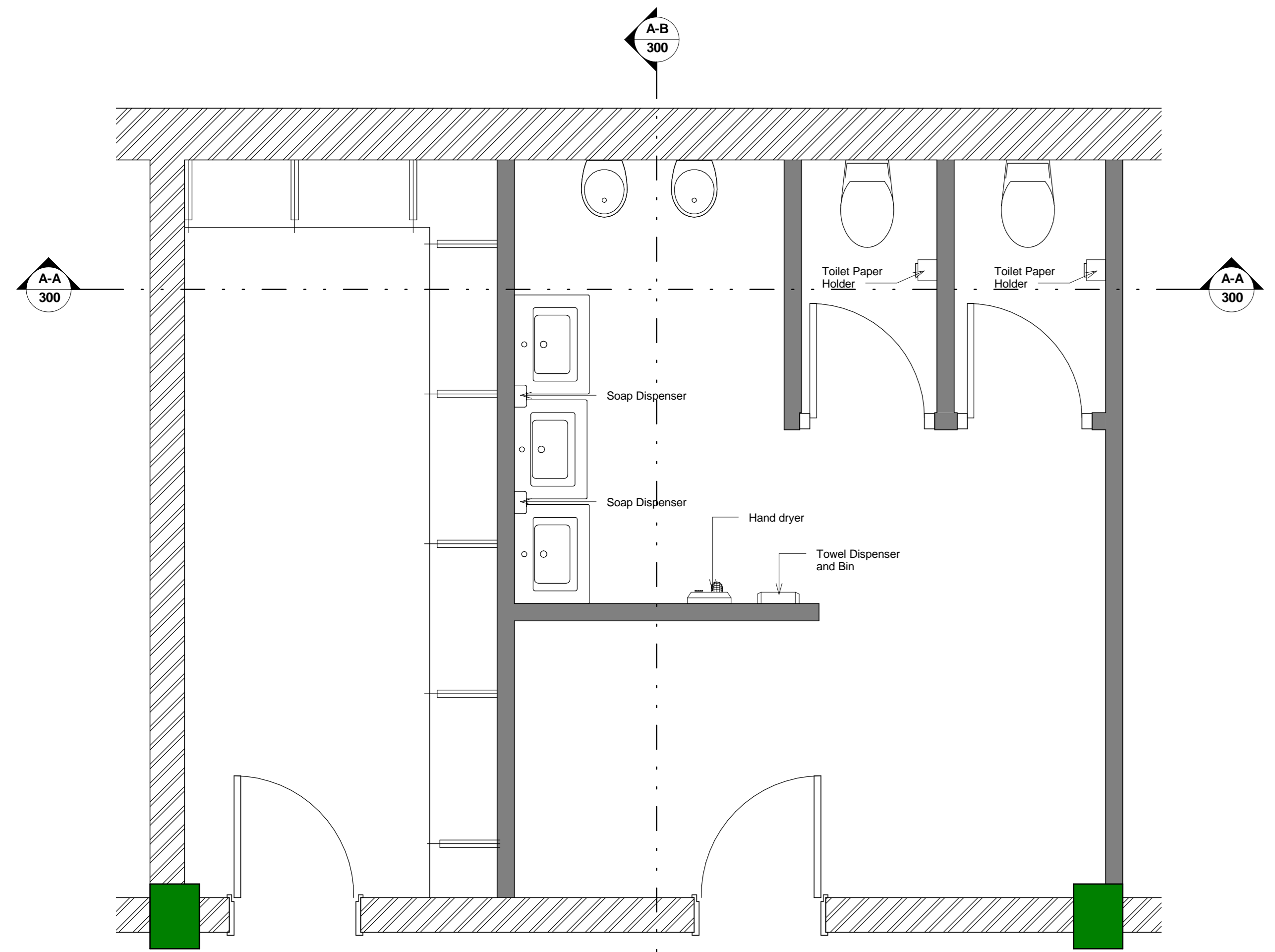
CHILL KITCHEN
1 : 25



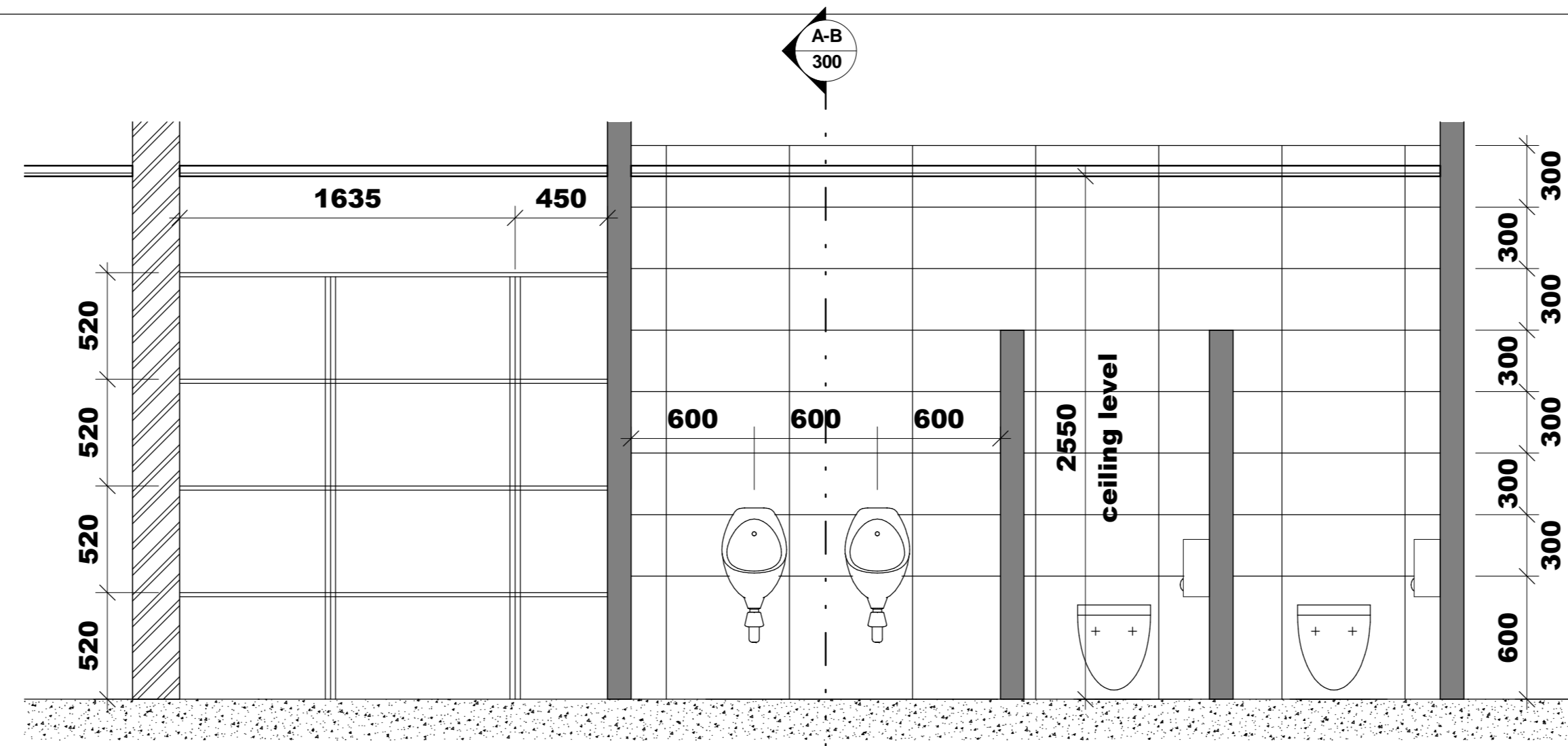
TOILET B
1 : 25



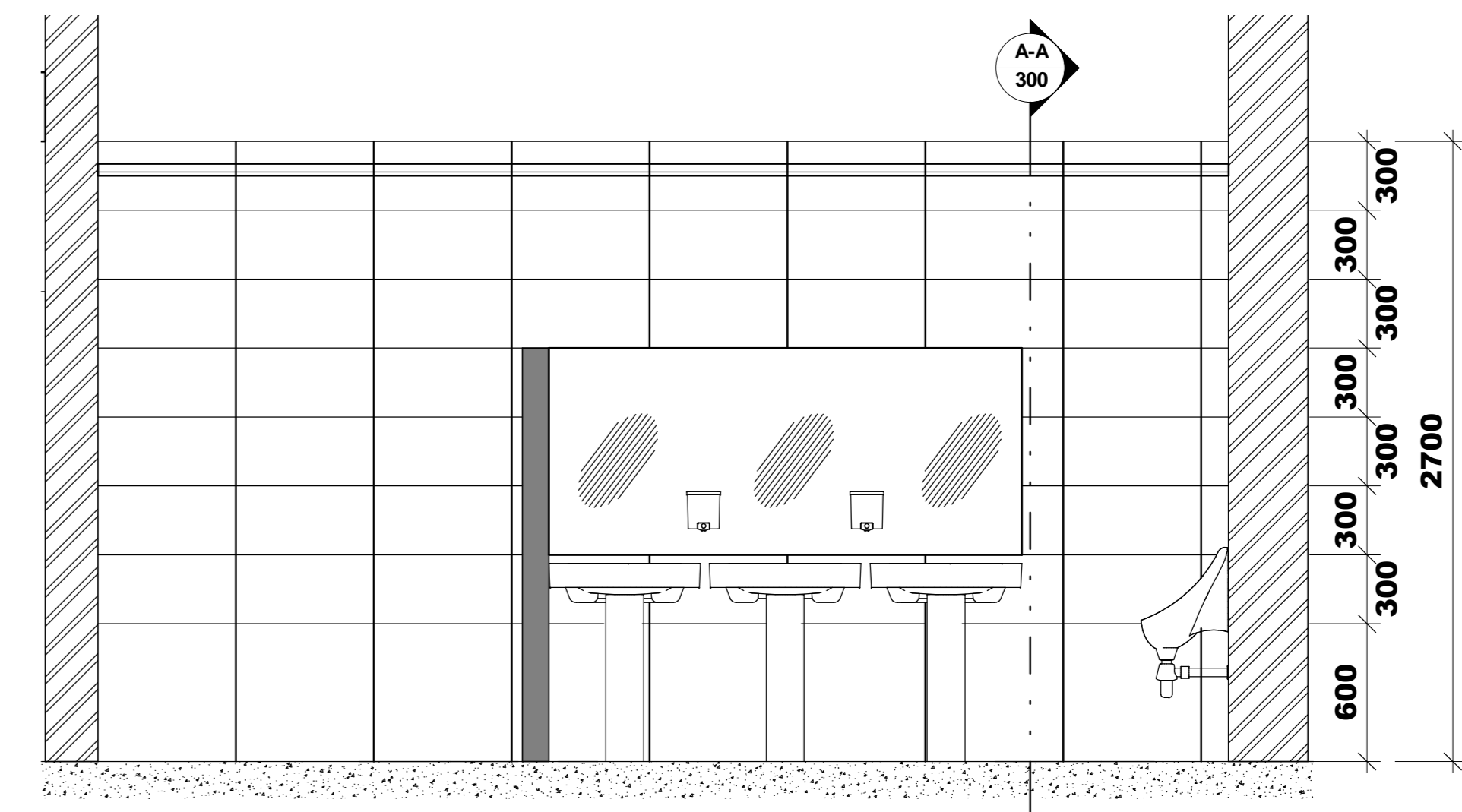
TOILET B-A
1 : 25



TOILET A
1 : 25



TOILET A-A
1 : 25



TOILET A-B
1 : 25

Sanitary Fixtures:

- All work to comply with SABS 500 and 62
- Sewer, drainage and stormwater pipes to be uPVC
- Main water supply pipe to Class 12 HDPE pressure pipe (20mm diameter)
- Piping for fire hose reels, galvanneal steel pipes
- Internal water pipes to be copper pipes
- Provide for pre-cast galleys, inspection and covers etc.
- Plumbing work to be executed by a licensed / registered plumber in accordance with the municipal by-laws and SABS codes
- All water piping is to be pressure tested prior to plastering.

WC: Vial Sanitaryware Onyx CC vitreous china wall hung washdown suite colour White, fixed on and including both through-the-wall tracker (code: 80422) comprising 90° outlet wall hung open rim pan (code: 43010) and matching 11 fire partition top dual flush back seat (code: 43007) including fitters, with purpose-made double flap wooden seat (code: 80202)

WC2: Vial Sanitaryware Onyx Paragig vitreous china wall hung parapig back inlet washdown suite colour White (code: 43011) fixed on and including fire track (code: 80222) comprising 90° outlet open rim pan, back inlet (code: 43015), 1 fire column (code: 71039), including 90 fitters and purpose-made double flap wooden seat (code: 80202)

WHB: Vial Sanitaryware Weaver vitreous china sink on vanity basin colour White (code: 704201), size 370 x 450mm with one light, fixed onto vanity top

URINAL: Cobra Watertech Collette top inlet urinal (code: WA-102-000) size 360 x 335 x 600mm high with waste outlet, fixed to wall hangers and female collar to the waste pipe (code: 71039), including 90 fitters and purpose-made double flap wooden seat (code: 80202)

KITCHEN SINK: Franke Curline Model CYN611 Grade 304 18/10 polished stainless steel right hand inset sink (code: 310370), size 660 x 455mm wide with one 370 x 340 x 162mm deep bowl, fitted into cabinet (dimensions specified) including 50mm waste fitting and Space 1 (code: 301152) plumbing kit.

Sink to come with accessory kit (code: 300661) consisting of chopping board, stainless steel dish drainer rack and stainless steel filter tray.

Toilet roll holder: Cobra Watertech Collette chrome plated toilet roll holder with lid (code: AC-0905-100) size 150 x 51 x 150mm high, plugged and screwed to wall.

Mirrors: Personalised Bathrooms Hangarop Acor wall mirror size 500 x 900mm with stainless steel trim to towel edge (code: H121800) steel.

White tap: Cobra Watertech Callisto single lever 15mm chrome single tap hole basin mixer with pop-up waste, mounting kit, single valves with sliding flanges, flexible connector tubes and temperature and flow control cartridge (code: CC-260), manufactured in accordance with SANS 1480:2005 (SIS EN 12086).

Kitchen tap: Cobra Watertech Strata single lever 15mm chrome single tap hole sink mixer with tubular swivel outlet, mounting kit and angle valve (code: SA-070), manufactured in accordance with SANS 1480:2005 (SIS EN 12086).

Grab rails 1: Franke CNTX 600 Grade 304 32mm diameter 18/10 stainless steel grab rails with Franke fire grip (product code: 306870) 600mm x 60mm deep, plugged and screwed to the wall with stainless steel screws.

Grab rails 2: Franke CNTX 700 A Grade 304 32mm diameter 18/10 stainless steel angle bars with Franke fire grip (product code: 306877), size 204 x 118 x 65mm deep, plugged and screwed to the wall with stainless steel screws.

Hand dryer: Franke HF2400 HD Grade 304 1.27.5mm thick 18/10 stainless steel automatic hand free hand dryer (product code: 305861), size 384 x 202 x 248mm deep with a vandal proof lock screws and key wrench, plugged and screwed to the wall with stainless steel screws, 250 W motor connected to 220V/50 voh power supply. With 5 year warranty.

Toilet dispenser: Franke Code 304 18/10 stainless steel sensor type paper roll dispenser (product code: 305702), size 450 x 290 x 253mm deep with paper size 203mm wide and security lock, plugged and screwed to the wall with stainless steel screws, including batteries.

Soap dispenser: Franke HF950 SD Grade 304 1.0mm thick 18/10 stainless steel automatic hands free soap dispenser (product code: 305966), size 270 x 115 x 110mm deep, plugged and screwed to the wall with stainless steel screws, including batteries. With 1 year warranty.

GENERAL NOTES:

- notes in respect of as standard code of practice for the application of the national building regulations, sans 10400
- part 1. public safety**
 - all balustrading to comply with s52
- part 2. stairs**
 - openings of stairways to be in compliance with rmc2
 - all balustrading to comply with rmc3
- part 3. lifts**
 - all lifts to comply with sabs code n
- part 4. lighting & ventilation**
 - all areas to be artificially lit in compliance with oof, offices & other habitable rooms min 300 lux, lobby min 150 lux
 - all structural elements & components to comply with s7
 - fire resistance of division separating elements to comply with r5
 - internal partitions and walls to comply with r2
 - all openings to be protected in accordance with r10
 - roof assemblies & coverings to comply with r12
 - all wall doors to comply with r17
 - all floor & ceiling doors to comply with r15
 - all air conditioning to be mechanically ventilated by extraction to external at rate of 20l/s/room
 - all air conditioning to be designed by a professional engineer and will be in accordance with fire regulations
- part 5. escape**
 - all escape routes to comply with s21
 - directions of components of escape routes to comply with s18 & s19
 - width of escape routes to comply with s21
 - directions of components of escape routes to comply with s21
 - all access doors to emergency routes to be sabs class b 120 min rated doors fitted with self closers in compliance with r14 & s4
 - all fire services are to be designed by a professional and registered fire consultant
 - all wet services are to be designed by a professional and registered engineer

part 6. stormwater disposal

- sizes of roof valleys & gutters to comply with s3
- drains to be accessible in accordance with s4
- the stormwater disposal system shall be designed by a professional engineer
- part 7. disabled persons**
 - ramps to be provided in accordance with s42
 - toilet facilities to be provided in accordance with s45
 - parking bays to be provided in compliance with s48
 - signage to comply with s49
- part 8. fire protection**
 - occupancy to comply with s3
 - all materials to comply with r5
 - all structural elements & components to comply with s7
 - fire resistance of division separating elements to comply with r5
 - internal partitions and walls to comply with r2
 - all openings to be protected in accordance with r10
 - roof assemblies & coverings to comply with r12
 - all wall doors to comply with r17
 - all floor & ceiling doors to comply with r15
 - all air conditioning to be mechanically ventilated by extraction to external at rate of 20l/s/room
 - all air conditioning to be designed by a professional engineer and will be in accordance with fire regulations
- part 9. electrical**
 - all electrical work to be in accordance with pp3 - pp5
 - all discharge & venting pipes to be installed in compliance with pp20
 - drains to be accessible in accordance with pp21
 - all sanitary fixtures to have traps in accordance with pp22
 - gals to comply with requirements of pp23
 - all drains to be laid in accordance with pp24
 - all wet services are to be designed by a professional and registered engineer

part 10. floor coverings

- all floor coverings to comply with s14
- all wall finishes to comply with s15
- leveler notes to be provided in accordance with s18
- when partition layouts are designed - to be submitted under separate application
- locks to escape & access doors to be fitted with knob/cylinder locks in compliance with s15.9
- ventilation to comply with s24
- all openings to be provided in accordance with s25
- signage to be provided in accordance with s25.1, s25.4 & s25.5
- emergency routes to be provided in accordance with s30, designed by professional engineer & certificate issued on completion
- water resistance to fire fighting purpose to be provided with s33
- fire hose reels to be provided in accordance with s34
- hydrants to be provided in accordance with s35
- portable fire extinguishers to be provided in accordance with s37 to the satisfaction of the chief fire officer
- any inaccessible concealed space with a max dimension of more than 5m to be fire stopped in accordance with s39
- service pipes, conduits & sleeves to comply with s41
- provision to be made for service ventilation and detection system designed in accordance with s42, designed by professional engineer & certificate issued on completion
- all air conditioning system to be designed by professional engineer to comply with s43 & certificate issued on completion
- all air conditioning system to be designed by professional engineer to comply with s43 & certificate issued on completion
- all air conditioning system to be designed by professional engineer to comply with s43 & certificate issued on completion
- parking to comply with s51
- no smoking signs to comply with s44
- sprinkler system to be designed by professional engineer & certificate issued on completion

part 11. waste disposal

- refuse area to be constituted & provided with hobs, bibtap & sump
- all floor coverings to comply with s14
- all wall finishes to comply with s15
- leveler notes to be provided in accordance with s18
- when partition layouts are designed - to be submitted under separate application
- locks to escape & access doors to be fitted with knob/cylinder locks in compliance with s15.9
- ventilation to comply with s24
- all openings to be provided in accordance with s25
- signage to be provided in accordance with s25.1, s25.4 & s25.5
- emergency routes to be provided in accordance with s30, designed by professional engineer & certificate issued on completion
- water resistance to fire fighting purpose to be provided with s33
- fire hose reels to be provided in accordance with s34
- hydrants to be provided in accordance with s35
- portable fire extinguishers to be provided in accordance with s37 to the satisfaction of the chief fire officer
- any inaccessible concealed space with a max dimension of more than 5m to be fire stopped in accordance with s39
- service pipes, conduits & sleeves to comply with s41
- provision to be made for service ventilation and detection system designed in accordance with s42, designed by professional engineer & certificate issued on completion
- all air conditioning system to be designed by professional engineer to comply with s43 & certificate issued on completion
- all air conditioning system to be designed by professional engineer to comply with s43 & certificate issued on completion
- all air conditioning system to be designed by professional engineer to comply with s43 & certificate issued on completion
- parking to comply with s51
- no smoking signs to comply with s44
- sprinkler system to be designed by professional engineer & certificate issued on completion

NO	DATE	AMENDMENT

old file name
REVIT 2015



ARCHITECTURE

service
PROPOSED NEW OFFICE LAYOUT FOR GPA

ref. no.	designed
scale	M.S.
date	checked
type number	N.M.
drawing number	300

02 AIRCON LAYOUT
1 : 75

