
Confidential



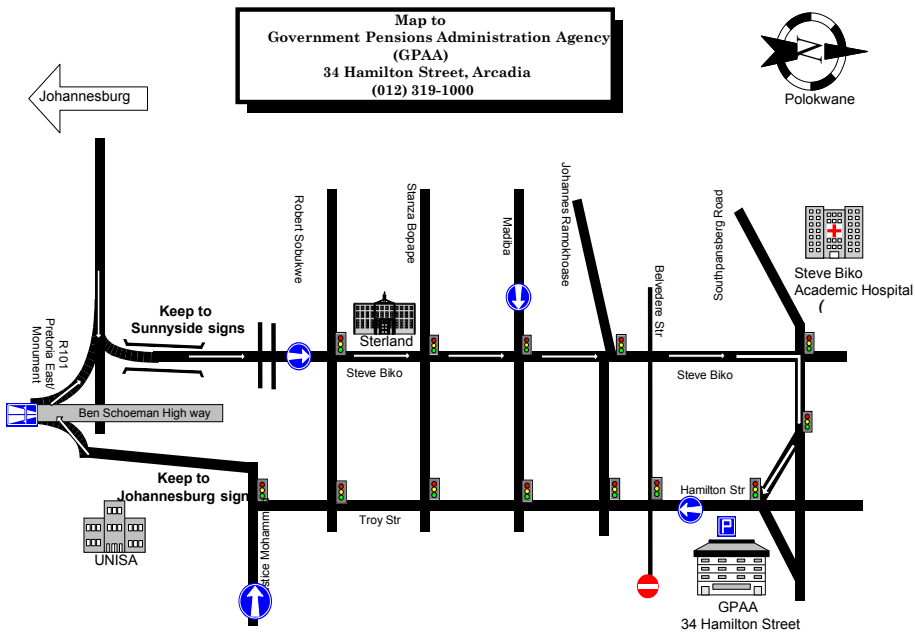
the gpaa

Department:
Government Pensions Administration Agency
REPUBLIC OF SOUTH AFRICA

**Government Pensions Administration
Agency
(GPAA)**

:

**Request for Proposals for Renovation of
GPAA
Bathrooms and Kitchens**



ALL BID DOCUMENTS TO BE DEPOSITED AT THE TENDER BOX SITUATED AT THE RECEPTION AREA AT:
 34 HAMILTON STR
 PRETORIA ARCADIA
 PENSIONS ADMINISTRATION BUILDING

INDEX

Topic	Page
1. SBD Forms	04 of 103 to 22 of 103
2. Special Conditions of Contract	23 of 103 to 25 of 103
3. General Conditions of Contract	26 of 103 to 37 of 103
4. Terms of Reference Annexure A and B	38 of 103 to 102 of 103
5. Evaluation criteria	103 of 103 to 103 of 103

Index to Administrative Annexure

Annexure	Topic
A	SBD Forms
B	Special Conditions of Contract
C	General Conditions of Contract

INVITATION TO BID

YOU ARE HEREBY INVITED TO BID FOR REQUIREMENTS OF GOVERNMENT PENSIONS ADMINISTRATION AGENCY (GPAA)

BID NUMBER: **GPAA 42/2016**

CLOSING DATE: **24 October 2016**

CLOSING TIME: **11:00am**

DESCRIPTION **Renovations of Bathrooms and Kitchens in the GPAA**

THE SUCCESSFUL BIDDER WILL BE REQUIRED TO FILL IN AND SIGN A WRITTEN CONTRACT FORM (SBD7.1 / SBD7.2 / SBD7.3)

BID DOCUMENTS MAY BE POSTED TO OR DEPOSITED IN THE BID BOX SITUATED AT GEPF ADDRESSED TO:

**The CEO: Government Pensions Administration Agency (GPAA)
Bid Administration
34 HAMILTON STR
ARCADIA
PRETORIA, TSHWANE
0001**

Bidders should ensure that bids are delivered timorously to the correct address. If the bid is late, it will not be accepted for consideration. The bid box is generally open 8 hours a day between 08:00 to 16:30, Monday to Fridays.

ALL BIDS MUST BE SUBMITTED WITH THE STANDARD FORMS – (NOT TO BE RE-TYPED)

THIS BID IS SUBJECT TO THE GENERAL CONDITIONS OF CONTRACT (GCC) AND, IF APPLICABLE, ANY OTHER SPECIAL CONDITIONS OF CONTRACT

THE FOLLOWING PARTICULARS MUST BE FURNISHED (FAILURE TO DO SO MAY RESULT IN THE BID BEING DISQUALIFIED) ALL STANADARD BIDDING DOCUMENT AS ATTACHED

NAME OF BIDDER.....

POSTAL ADDRESS.....

STREET ADDRESS.....

TELEPHONE NUMBER CODE.....NUMBER.....

CELLPHONE NUMBER.....

FACSIMILE NUMBER CODE NUMBER.....

VAT REGISTRATION NUMBER

HAS A TAX CLEARANCE CERTIFICATE BEEN SUBMITTED (SBD2)? YES/NO

SIGNATURE OF BIDDER

DATE

CAPACITY UNDER WHICH THIS BID IS SIGNED

DECLARATION OF INTEREST

1. Any legal person, including persons employed by the state¹, or persons having a kinship with persons employed by the state, including a blood relationship, may make an offer or offers in terms of this invitation to bid (includes a price quotation, advertised competitive bid, limited bid or proposal). In view of possible allegations of favouritism, should the resulting bid, or part thereof, be awarded to persons employed by the state, or to persons connected with or related to them, it is required that the bidder or his/her authorised representative declare his/her position in relation to the evaluating/adjudicating authority where-

- the bidder is employed by the state; and/or
- the legal person on whose behalf the bidding document is signed, has a relationship with persons/a person who are/is involved in the evaluation and or adjudication of the bid(s), or where it is known that such a relationship exists between the person or persons for or on whose behalf the declarant acts and persons who are involved with the evaluation and or adjudication of the bid.

2. **In order to give effect to the above, the following questionnaire must be completed and submitted with the bid.**

2.1 Full Name of bidder or his or her representative:

2.2 Identity Number:

2.3 Position occupied in the Company (director, trustee, shareholder²):

2.4 Company Registration Number:

2.5 Tax Reference Number:

2.6 VAT Registration Number:

2.6.1 The names of all directors / trustees / shareholders / members, their individual identity numbers, tax reference numbers and, if applicable, employee / persal numbers must be indicated in paragraph 3 below.

¹"State" means –

- (a) any national or provincial department, national or provincial public entity or constitutional institution within the meaning of the Public Finance Management Act, 1999 (Act No. 1 of 1999);
- (b) any municipality or municipal entity;
- (c) provincial legislature;
- (d) national Assembly or the national Council of provinces; or
- (e) Parliament.

²"Shareholder" means a person who owns shares in the company and is actively involved in the management of the enterprise or business and exercises control over the enterprise.

2.7 Are you or any person connected with the bidder presently employed by the state? **YES / NO**

2.7.1 If so, furnish the following particulars:

Name of person / director / trustee / shareholder/ member:
Name of state institution at which you or the person connected to the bidder is employed :
Position occupied in the state institution:

Any other particulars:
.....
.....
.....

2.7.2 If you are presently employed by the state, did you obtain the appropriate authority to undertake remunerative work outside employment in the public sector? **YES / NO**

2.7.2.1 If yes, did you attached proof of such authority to the bid document? **YES / NO**

(Note: Failure to submit proof of such authority, where applicable, may result in the disqualification of the bid.

2.7.2.2 If no, furnish reasons for non-submission of such proof:

.....
.....
.....

2.8 Did you or your spouse, or any of the company's directors / trustees / shareholders / members or their spouses conduct business with the state in the previous twelve months? **YES / NO**

2.8.1 If so, furnish particulars:

.....
.....
.....

2.9 Do you, or any person connected with the bidder, have any relationship (family, friend, other) with a person employed by the state and who may be involved with the evaluation and or adjudication of this bid? **YES / NO**

2.9.1 If so, furnish particulars.

.....
.....
.....

2.10 Are you, or any person connected with the bidder, aware of any relationship (family, friend, other) between any other bidder and any person employed by the state who may be involved with the evaluation and or adjudication of this bid?

YES/NO

2.10.1 If so, furnish particulars.

.....

2.11 Do you or any of the directors / trustees / shareholders / members of the company have any interest in any other related companies whether or not they are bidding for this contract?

YES/NO

2.11.1 If so, furnish particulars:

.....

3 Full details of directors / trustees / members / shareholders.

Full Name	Identity Number	Personal Tax Reference Number	State Employee Number / Persal Number

4. DECLARATION

I, THE UNDERSIGNED (NAME).....CERTIFY THAT THE INFORMATION FURNISHED IN PARAGRAPHS 2 and 3 ABOVE IS CORRECT. I ACCEPT THAT THE STATE MAY REJECT THE BID OR ACT AGAINST ME IN TERMS OF PARAGRAPH 23 OF THE GENERAL CONDITIONS OF CONTRACT SHOULD THIS DECLARATION PROVE TO BE FALSE.

.....
Signature

.....
Date

.....
Position

.....
Name of bidder

PREFERENCE POINTS CLAIM FORM IN TERMS OF THE PREFERENTIAL PROCUREMENT REGULATIONS 2011

This preference form must form part of all bids invited. It contains general information and serves as a claim form for preference points for Broad-Based Black Economic Empowerment (B-BBEE) Status Level of Contribution

NB: BEFORE COMPLETING THIS FORM, BIDDERS MUST STUDY THE GENERAL CONDITIONS, DEFINITIONS AND DIRECTIVES APPLICABLE IN RESPECT OF B-BBEE, AS PRESCRIBED IN THE PREFERENTIAL PROCUREMENT REGULATIONS, 2011.

1. GENERAL CONDITIONS

1.1 The following preference point systems are applicable to all bids:

- the 80/20 system for requirements with a Rand value of up to R1 000 000 (all applicable taxes included); and
- the 90/10 system for requirements with a Rand value above R1 000 000 (all applicable taxes included).

1.2 The value of this bid is estimated to exceed R1 000 000 (all applicable taxes included) and therefore the **90/10** system shall be applicable.

1.3 Preference points for this bid shall be awarded for:

- (a) Price; and
- (b) B-BBEE Status Level of Contribution.

1.3.1 The maximum points for this bid are allocated as follows:

	POINTS
1.3.1.1 PRICE	90
1.3.1.2 B-BBEE STATUS LEVEL OF CONTRIBUTION	10
Total points for Price and B-BBEE must not exceed	100

1.4 Failure on the part of a bidder to fill in and/or to sign this form and submit a B-BBEE Verification Certificate from a Verification Agency accredited by the South African Accreditation System (SANAS) or a Registered Auditor approved by the Independent Regulatory Board of Auditors (IRBA) or an Accounting Officer as contemplated in the Close Corporation Act (CCA) together with the bid, will be interpreted to mean that preference points for B-BBEE status level of contribution are not claimed.

1.5 The purchaser reserves the right to require of a bidder, either before a bid is adjudicated or at any time subsequently, to substantiate any claim in regard to preferences, in any manner required by the purchaser.

2. DEFINITIONS

- 2.1.1 **“All applicable taxes”** includes value-added tax, pay as you earn, income tax, unemployment insurance fund contributions and skills development levies;
- 2.2 **“B-BBEE”** means broad-based black economic empowerment as defined in section 1 of the Broad-Based Black Economic Empowerment Act;
- 2.3 **“B-BBEE status level of contributor”** means the B-BBEE status received by a measured entity based on its overall performance using the relevant scorecard contained in the Codes of Good Practice on Black Economic Empowerment, issued in terms of section 9(1) of the Broad-Based Black Economic Empowerment Act;
- 2.4 **“Bid”** means a written offer in a prescribed or stipulated form in response to an invitation by an organ of state for the provision of services, works or goods, through price quotations, advertised competitive bidding processes or proposals;
- 2.5 **“Broad-Based Black Economic Empowerment Act”** means the Broad-Based Black Economic Empowerment Act, 2003 (Act No. 53 of 2003);
- 2.6 **“Comparative price”** means the price after the factors of a non-firm price and all unconditional discounts that can be utilized have been taken into consideration;
- 2.7 **“Consortium or joint venture”** means an association of persons for the purpose of combining their expertise, property, capital, efforts, skill and knowledge in an activity for the execution of a contract;
- 2.8 **“Contract”** means the agreement that results from the acceptance of a bid by an organ of state;
- 2.9 **“EME”** means any enterprise with an annual total revenue of R5 million or less .
- 2.10 **“Firm price”** means the price that is only subject to adjustments in accordance with the actual increase or decrease resulting from the change, imposition, or abolition of customs or excise duty and any other duty, levy, or tax, which, in terms of the law or regulation, is binding on the contractor and demonstrably has an influence on the price of any supplies, or the rendering costs of any service, for the execution of the contract;
- 2.11 **“Functionality”** means the measurement according to predetermined norms, as set out in the bid documents, of a service or commodity that is designed to be practical and useful, working or operating, taking into account, among other factors, the quality, reliability, viability and durability of a service and the technical capacity and ability of a bidder;
- 2.12 **“Non-firm prices”** means all prices other than “firm” prices;
- 2.13 **“Person”** includes a juristic person;
- 2.14 **“Rand value”** means the total estimated value of a contract in South African currency, calculated at the time of bid invitations, and includes all applicable taxes and excise duties;
- 2.15 **“Sub-contract”** means the primary contractor’s assigning, leasing, making out work to, or employing, another person to support such primary contractor in the execution of part of a project in terms of the contract;
- 2.16 **“Total revenue”** bears the same meaning assigned to this expression in the Codes of Good Practice on Black Economic Empowerment, issued in terms of section 9(1) of the Broad-Based Black Economic Empowerment Act and promulgated in the *Government Gazette* on 9 February 2007;
- 2.17 **“Trust”** means the arrangement through which the property of one person is made over or bequeathed to a trustee to administer such property for the benefit of another person; and
- 2.18 **“Trustee”** means any person, including the founder of a trust, to whom property is bequeathed in order for such property to be administered for the benefit of another person.

3. ADJUDICATION USING A POINT SYSTEM

- 3.1 The bidder obtaining the highest number of total points will be awarded the contract.
- 3.2 Preference points shall be calculated after prices have been brought to a comparative basis taking into account all factors of non-firm prices and all unconditional discounts;.
- 3.3 Points scored must be rounded off to the nearest 2 decimal places.
- 3.4 In the event that two or more bids have scored equal total points, the successful bid must be the one scoring the highest number of preference points for B-BBEE.
- 3.5 However, when functionality is part of the evaluation process and two or more bids have scored equal points including equal preference points for B-BBEE, the successful bid must be the one scoring the highest score for functionality.
- 3.6 Should two or more bids be equal in all respects, the award shall be decided by the drawing of lots.

4. POINTS AWARDED FOR PRICE

4.1 THE 90/10 PREFERENCE POINT SYSTEMS

A maximum of 90 points is allocated for price on the following basis:

90/10

$$P_s = 90 \left(1 - \frac{P_t - P_{\min}}{P_{\min}} \right)$$

Where

P_s = Points scored for comparative price of bid under consideration

P_t = Comparative price of bid under consideration

P_{min} = Comparative price of lowest acceptable bid

5. Points awarded for B-BBEE Status Level of Contribution

- 5.1 In terms of Regulation 5 (2) and 6 (2) of the Preferential Procurement Regulations, preference points must be awarded to a bidder for attaining the B-BBEE status level of contribution in accordance with the table below:

B-BBEE Status Level of Contributor	Number of points (90/10 system)	Number of points (80/20 system)
-------------------------------------------	----------------------------------------	----------------------------------------

1	10	20
2	9	18
3	8	16
4	5	12
5	4	8
6	3	6
7	2	4
8	1	2
Non-compliant contributor	0	0

- 5.2 Bidders who qualify as EMEs in terms of the B-BBEE Act must submit a certificate issued by an Accounting Officer as contemplated in the CCA or a Verification Agency accredited by SANAS or a Registered Auditor. Registered auditors do not need to meet the prerequisite for IRBA's approval for the purpose of conducting verification and issuing EMEs with B-BBEE Status Level Certificates.
- 5.3 Bidders other than EMEs must submit their original and valid B-BBEE status level verification certificate or a certified copy thereof, substantiating their B-BBEE rating issued by a Registered Auditor approved by IRBA or a Verification Agency accredited by SANAS.
- 5.4 A trust, consortium or joint venture, will qualify for points for their B-BBEE status level as a legal entity, provided that the entity submits their B-BBEE status level certificate.
- 5.5 A trust, consortium or joint venture will qualify for points for their B-BBEE status level as an unincorporated entity, provided that the entity submits their consolidated B-BBEE scorecard as if they were a group structure and that such a consolidated B-BBEE scorecard is prepared for every separate bid.
- 5.6 Tertiary institutions and public entities will be required to submit their B-BBEE status level certificates in terms of the specialized scorecard contained in the B-BBEE Codes of Good Practice.
- 5.7 A person will not be awarded points for B-BBEE status level if it is indicated in the bid documents that such a bidder intends sub-contracting more than 25% of the value of the contract to any other enterprise that does not qualify for at least the points that such a bidder qualifies for, unless the intended sub-contractor is an EME that has the capability and ability to execute the sub-contract.
- 5.8 A person awarded a contract may not sub-contract more than 25% of the value of the contract to any other enterprise that does not have an equal or higher B-BBEE status level than the person concerned, unless the contract is sub-contracted to an EME that has the capability and ability to execute the sub-contract.

6. BID DECLARATION

- 6.1 Bidders who claim points in respect of B-BBEE Status Level of Contribution must complete the following:

7. B-BBEE STATUS LEVEL OF CONTRIBUTION CLAIMED IN TERMS OF PARAGRAPHS 1.3.1.2 AND 5.1

7.1 B-BBEE Status Level of Contribution: = (maximum of 10 points)

(Points claimed in respect of paragraph 7.1 must be in accordance with the table reflected in paragraph 5.1 and must be substantiated by means of a B-BBEE certificate issued by a Verification Agency accredited by SANAS or a Registered Auditor approved by IRBA or an Accounting Officer as contemplated in the CCA).

8 SUB-CONTRACTING

8.1 Will any portion of the contract be sub-contracted? YES / NO (delete which is not applicable)

8.1.1 If yes, indicate:

- (i) what percentage of the contract will be subcontracted?%
- (ii) the name of the sub-contractor?
- (iii) the B-BBEE status level of the sub-contractor?
- (iv) whether the sub-contractor is an EME? YES/NO (delete which is not applicable)

9 DECLARATION WITH REGARD TO COMPANY/FIRM

9.1 Name of company/firm :

9.2 VAT registration number :

9.3 Company registration number

:

9.4 TYPE OF COMPANY/ FIRM

- Partnership/Joint Venture / Consortium
- One person business/sole propriety
- Close corporation
- Company
- (Pty) Limited

[TICK APPLICABLE BOX]

9.5 DESCRIBE PRINCIPAL BUSINESS ACTIVITIES

.....
.....
.....

9.6 COMPANY CLASSIFICATION

- Manufacturer
- Supplier
- Professional service provider
- Other service providers, e.g. transporter, etc.

[TICK APPLICABLE BOX]

9.7 Total number of years the company/firm has been in business?

9.8 I/we, the undersigned, who is / are duly authorised to do so on behalf of the company/firm, certify that the points claimed, based on the B-BBE status level of contribution indicated in paragraph 7 of the foregoing certificate, qualifies the company/ firm for the preference(s) shown and I / we acknowledge that:

- (i) The information furnished is true and correct;
- (ii) The preference points claimed are in accordance with the General Conditions as indicated in paragraph 1 of this form.
- (iii) In the event of a contract being awarded as a result of points claimed as shown in paragraph 7, the contractor may be required to furnish documentary proof to the satisfaction of the purchaser that the claims are correct;
- (iv) If the B-BBEE status level of contribution has been claimed or obtained on a fraudulent basis or any of the conditions of contract have not been fulfilled, the purchaser may, in addition to any other remedy it may have –
 - (a) disqualify the person from the bidding process;
 - (b) recover costs, losses or damages it has incurred or suffered as a result of that person's conduct;
 - (c) cancel the contract and claim any damages which it has suffered as a result of having to make less favourable arrangements due to such cancellation;
 - (d) restrict the bidder or contractor, its shareholders and directors, or only the shareholders and directors who acted on a fraudulent basis, from obtaining business from any organ of state for a period not exceeding 10 years, after the audi alteram partem (hear the other side) rule has been applied; and
 - (e) forward the matter for criminal prosecution

WITNESSES:

1.

.....
SIGNATURE(S) OF BIDDER(S)

2.

DATE:.....

ADDRESS:.....

DECLARATION CERTIFICATE FOR LOCAL PRODUCTION AND CONTENT

This Standard Bidding Document (SBD) must form part of all bids invited. It contains general information and serves as a declaration form for local content (local production and local content are used interchangeably).

Before completing this declaration, bidders must study the General Conditions, Definitions, Directives applicable in respect of Local Content as prescribed in the Preferential Procurement Regulations, 2011 and the South African Bureau of Standards (SABS) approved technical specification number SATS 1286:201x.

1. General Conditions

- 1.1. Preferential Procurement Regulations, 2011 (Regulation 9. (1) and 9. (3) make provision for the promotion of local production and content.
- 1.2. Regulation 9.(1) prescribes that in the case of designated sectors, where in the award of bids local production and content is of critical importance, such bids must be advertised with the specific bidding condition that only locally produced goods, services or works or locally manufactured goods, with a stipulated minimum threshold for local production and content will be considered.
- 1.3. Regulation 9.(3) prescribes that where there is no designated sector, a specific bidding condition may be included, that only locally produced services, works or goods or locally manufactured goods with a stipulated minimum threshold for local production and content, will be considered.
- 1.4. Where necessary, for bids referred to in paragraphs 1.2 and 1.3 above, a two stage bidding process may be followed, where the first stage involves a minimum threshold for local production and content and the second stage price and B-BBEE.
- 1.5. A person awarded a contract in relation to a designated sector, may not sub-contract in such a manner that the local production and content of the overall value of the contract is reduced to below the stipulated minimum threshold.
- 1.6. The local content (LC) as a percentage of the bid price must be calculated in accordance with the SABS approved technical specification number SATS 1286: 201x as follows:

$$LC = 1 - \left[\frac{x}{y} \right] \times 100$$

Where

- x imported content
y bid price excluding value added tax (VAT)

Prices referred to in the determination of x must be converted to Rand (ZAR) by using the exchange rate published by South African Reserve Bank (SARB) at 12:00 on the date, one week (7 calendar days) prior to the closing date of the bid as indicated in paragraph 4.1 below.

- 1.7. A bid will be disqualified if:

- the bidder fails to achieve the stipulated minimum threshold for local production and content indicated in paragraph 3 below; and
- this declaration certificate is not submitted as part of the bid documentation.

2. Definitions

- 2.1. **“Bid”** includes advertised competitive bids, written price quotations or proposals;
- 2.2. **“Bid price”** price offered by the bidder, excluding value added tax (VAT);
- 2.3. **“Contract”** means the agreement that results from the acceptance of a bid by an organ of state;

- 2.4. **“Designated sector”** means a sector, sub-sector or industry that has been designated by the Department of Trade and Industry in line with national development and industrial policies for local production, where only locally produced services, works or goods or locally manufactured goods meet the stipulated minimum threshold for local production and content;
- 2.5. **“Duly sign”** means a Declaration Certificate for Local Content that has been signed by the Chief Financial Officer or other legally responsible person nominated in writing by the Chief Executive, or senior member / person with management responsibility(close corporation, partnership or individual).
- 2.6. **“Imported content”** means that portion of the bid price represented by the cost of components, parts or materials which have been or are still to be imported (whether by the supplier or its subcontractors) and which costs are inclusive of the costs abroad, plus freight and other direct importation costs, such as landing costs, dock duties, import duty, sales duty or other similar tax or duty at the South African port of entry;
- 2.7. **“Local content”** means that portion of the bid price which is not included in the imported content, provided that local manufacture does take place;
- 2.8. **“Stipulated minimum threshold”** means that portion of local production and content as determined by the Department of Trade and Industry; and
- 2.9. **“Sub-contract”** means the primary contractor’s assigning, leasing, making out work to, or employing another person to support such primary contractor in the execution of part of a project in terms of the contract.

3. The stipulated minimum threshold(s) for local production and content for this bid

ITEM NUMBER	DESCRIPTION OF GOODS	STIPULATED MINIMUM THRESHOLD
	<p>Floor cabinet on plan 3700mm long overall x 600mm deep x 900mm high of white melamine inside shelving and finishes, melawood mahogany doors with PVC edges, supawood kick plate (for tile skirting by others) aluminium handles, heavy duty drawer sliders and 32mm Rustenburg black granite top with bull nosed edge and with hole cut for and including Franke Trendline 721 DEB sink and with hole cut for mixer (supplied and fitted).</p> <p>Wall cabinet 1650mm long x 400mm deep x 900mm high of white melamine inside shelving and finishes, melawood mahogany doors with PVC edges, aluminium handles.</p> <p>Broom cabinet 380mm wide x 600mm deep x 2100mm high of white melamine inside shelving and finishes, melawood mahogany doors with PVC edges, supawood kickplate (for tile skirting by others) aluminium handles.</p>	100%
	<p>Floor cabinet on plan 2100mm long overall x 600mm deep x 900mm high of white melamine inside shelving and finishes, melawood mahogany doors with PVC edges, supawood kick plate (for tile skirting by others) aluminium handles, heavy duty drawer sliders and 32mm Rustenburg black granite top with bull nosed edge and with hole cut for and including Franke Trendline 721 DEB sink and with hole cut for mixer (supplied and fitted).</p> <p>Wall cabinet 1650mm long x 400mm deep x 900mm high of white melamine inside shelving and finishes, melawood mahogany doors with PVC edges, aluminium handles.</p>	100%

4. Does any portion of the services, works or goods offered have any imported content?

YES / NO

4.1 If yes, the rate(s) of exchange to be used in this bid to calculate the local content as prescribed in paragraph 1.6 of the general conditions must be the rate(s) published by SARB for the specific currency at 12:00 on the date, one week (7 calendar days) prior to the closing date of the bid.

The relevant rates of exchange information is accessible on **www.reservebank.co.za**.

Indicate the rate(s) of exchange against the appropriate currency in the table below:

Currency	Rates of exchange
US Dollar	
Pound Sterling	
Euro	
Yen	
Other	

NB: Bidders must submit proof of the SARB rate (s) of exchange used.

5. Were the local Content Declaration Templates(Annexure C,D and E) audited and certified as correct? YES/NO

- 5.1 If yes, provide the following particulars:.....
- (a) Full Name of Auditor.....
 - (b) Practice number.....
 - (c) Telephone and cell number.....
 - (d) E-mail address:.....

(Documentary proof regarding the declaration will, when required, be submitted to the satisfaction of the Accounting Officer/Accounting Authority)

6. Where after the award of the bid, challenges are experienced in meeting the stipulated minimum threshold for local content the dti must be informed accordingly in order for the dti to verify and in consultation with the AO/AA provide directives in this regard

**LOCAL CONTENT DECLARATION
REFER TO ANNEXURE B OF SATS 1286:2011**

LOCAL CONTENT DECLARATION BY CHIEF FINANCIAL OFFICER OR OTHER LEGALLY RESPONSIBLE PERSON NOMINATED IN WRITING BY THE CHIEF EXECUTIVE OR SENIOR MEMBER/PERSON WITH MANAGEMENT RESPONSIBILITY (CLOSE CORPORATION, PARTNERSHIP OR INDIVIDUAL)

IN RESPECT OF BID No.

ISSUED BY: (Procurement Authority / Name of Institution):
.....

NB The obligation to complete, duly sign and submit this declaration cannot be transferred to an external authorized representative, auditor or any other third party acting on behalf of the bidder.

I, the undersigned, (full names),
hereby declare, in my capacity as
of(name of bidder entity), the
following:

- (a) The facts contained herein are within my own personal knowledge.
- (b) I have satisfied myself that the goods/services/works to be delivered in terms of the above-specified bid comply with the minimum local content requirements as specified in the bid, and as measured in terms of SATS 1286.
- (c) The local content has been calculated using the formula given in clause 3 of SATS 1286, the rates of exchange indicated in paragraph 4.1 above and the following figures:

Bid price, excluding VAT (y)	R
Imported content (x)	R
Stipulated minimum threshold for Local content (paragraph 3 above)	
Local content % , as calculated in terms of SATS 1286	

If the bid is for more than one product, a schedule of the local content by product shall be attached.

- (d) I accept that the Procurement Authority / Institution has the right to request that the local content be verified in terms of the requirements of SATS 1286.
- (e) I understand that the awarding of the bid is dependent on the accuracy of the information furnished in this application. I also understand that the submission of incorrect data, or data that are not verifiable as described in SATS 1286, may result in the Procurement Authority / Institution imposing any or all of the remedies as provided for in Regulation 13 of the Preferential Procurement Regulations, 2011 promulgated under the Policy Framework Act (PPFA), 2000 (Act No. 5 of 2000).

SIGNATURE: _____

DATE: _____

WITNESS No. 1 _____

DATE: _____

WITNESS No. 2 _____

DATE: _____

DECLARATION OF BIDDER'S PAST SUPPLY CHAIN MANAGEMENT PRACTICES

1. This Standard Bidding Document must form part of all bids invited.
2. It serves as a declaration to be used by institutions in ensuring that when goods and services are being procured, all reasonable steps are taken to combat the abuse of the supply chain management system.
3. The bid of any bidder may be disregarded if that bidder, or any of its directors have:
 - a. abused the institution's supply chain management system;
 - b. committed fraud or any other improper conduct in relation to such system; or
 - c. Failed to perform on any previous contract.
4. **In order to give effect to the above, the following questionnaire must be completed and submitted with the bid.**

Item	Question	Yes	No
4.1	Is the bidder or any of its directors listed on the National Treasury's database as companies or persons prohibited from doing business with the public sector? (Companies or persons who are listed on this database were informed in writing of this restriction by the National Treasury after the <i>audi alteram partem</i> rule was applied).	Yes <input type="checkbox"/>	No <input type="checkbox"/>
4.1.1	If so, furnish particulars:		
4.2	Is the bidder or any of its directors listed on the Register for Tender Defaulters in terms of section 29 of the Prevention and Combating of Corrupt Activities Act (No 12 of 2004)? To access this Register enter the National Treasury's website: www.treasury.gov.za, click on the icon "Register for Tender Defaulters" or submit your written request for a hard copy of the Register to facsimile number (012) 3265445.	Yes <input type="checkbox"/>	No <input type="checkbox"/>
4.2.1	If so, furnish particulars:		
4.3	Was the bidder or any of its directors convicted by a court of law (including a court outside of the Republic of South Africa) for fraud or corruption during the past five years?	Yes <input type="checkbox"/>	No <input type="checkbox"/>
4.3.1	If so, furnish particulars:		
4.4	Was any contract between the bidder and any organ of state terminated during the past five years on account of failure to perform on or comply with the contract?	Yes <input type="checkbox"/>	No <input type="checkbox"/>
4.4.1	If so, furnish particulars:		

CERTIFICATION

I, THE UNDERSIGNED (FULL NAME)..... CERTIFY THAT THE INFORMATION FURNISHED ON THIS DECLARATION FORM IS TRUE AND CORRECT. I ACCEPT THAT, IN ADDITION TO CANCELLATION OF A CONTRACT, ACTION MAY BE TAKEN AGAINST ME SHOULD THIS DECLARATION PROVE TO BE FALSE.

.....
Signature

.....
Date

.....
Position

.....
Name of Bidder

CERTIFICATE OF INDEPENDENT BID DETERMINATION

- 1 This Standard Bidding Document (SBD) must form part of all bids¹ invited.
- 2 Section 4 (1) (b) (iii) of the Competition Act No. 89 of 1998, as amended, prohibits an agreement between, or concerted practice by, firms, or a decision by an association of firms, if it is between parties in a horizontal relationship and if it involves collusive bidding (or bid rigging).² Collusive bidding is a *pe se* prohibition meaning that it cannot be justified under any grounds.
- 3 Treasury Regulation 16A9 prescribes that accounting officers and accounting authorities must take all reasonable steps to prevent abuse of the supply chain management system and authorizes accounting officers and accounting authorities to:
 - a. disregard the bid of any bidder if that bidder, or any of its directors have abused the institution's supply chain management system and or committed fraud or any other improper conduct in relation to such system.
 - b. cancel a contract awarded to a supplier of goods and services if the supplier committed any corrupt or fraudulent act during the bidding process or the execution of that contract.
- 4 This SBD serves as a certificate of declaration that would be used by institutions to ensure that, when bids are considered, reasonable steps are taken to prevent any form of bid-rigging.
- 5 In order to give effect to the above, the attached Certificate of Bid Determination (SBD 9) must be completed and submitted with the bid:

¹ Includes price quotations, advertised competitive bids, limited bids and proposals.

² Bid rigging (or collusive bidding) occurs when businesses, that would otherwise be expected to compete, secretly conspire to raise prices or lower the quality of goods and / or services for purchasers who wish to acquire goods and / or services through a bidding process. Bid rigging is, therefore, an agreement between competitors not to compete.

CERTIFICATE OF INDEPENDENT BID DETERMINATION

I, the undersigned, in submitting the accompanying bid:

(Bid Number and Description)

in response to the invitation for the bid made by:

(Name of Institution)

do hereby make the following statements that I certify to be true and complete in every respect:

I certify, on behalf of: _____ that:

(Name of Bidder)

1. I have read and I understand the contents of this Certificate;
2. I understand that the accompanying bid will be disqualified if this Certificate is found not to be true and complete in every respect;
3. I am authorized by the bidder to sign this Certificate, and to submit the accompanying bid, on behalf of the bidder;
4. Each person whose signature appears on the accompanying bid has been authorized by the bidder to determine the terms of, and to sign the bid, on behalf of the bidder;
5. For the purposes of this Certificate and the accompanying bid, I understand that the word "competitor" shall include any individual or organization, other than the bidder, whether or not affiliated with the bidder, who:
 - (a) has been requested to submit a bid in response to this bid invitation;
 - (b) could potentially submit a bid in response to this bid invitation, based on their qualifications, abilities or experience; and
 - (c) provides the same goods and services as the bidder and/or is in the same line of business as the bidder

6. The bidder has arrived at the accompanying bid independently from, and without consultation, communication, agreement or arrangement with any competitor. However communication between partners in a joint venture or consortium³ will not be construed as collusive bidding.
7. In particular, without limiting the generality of paragraphs 6 above, there has been no consultation, communication, agreement or arrangement with any competitor regarding:
 - (a) prices;
 - (b) geographical area where product or service will be rendered (market allocation)
 - (c) methods, factors or formulas used to calculate prices;
 - (d) the intention or decision to submit or not to submit, a bid;
 - (e) the submission of a bid which does not meet the specifications and conditions of the bid; or
 - (f) bidding with the intention not to win the bid.
8. In addition, there have been no consultations, communications, agreements or arrangements with any competitor regarding the quality, quantity, specifications and conditions or delivery particulars of the products or services to which this bid invitation relates.
9. The terms of the accompanying bid have not been, and will not be, disclosed by the bidder, directly or indirectly, to any competitor, prior to the date and time of the official bid opening or of the awarding of the contract.
10. I am aware that, in addition and without prejudice to any other remedy provided to combat any restrictive practices related to bids and contracts, bids that are suspicious will be reported to the Competition Commission for investigation and

possible imposition of administrative penalties in terms of section 59 of the Competition Act No 89 of 1998 and or may be reported to the National Prosecuting Authority (NPA) for criminal investigation and or may be restricted from conducting business with the public sector for a period not exceeding ten (10) years in terms of the Prevention and Combating of Corrupt Activities Act No 12 of 2004 or any other applicable legislation.

.....
Signature	Date
.....
Position	Name of Bidder

Annexure A

(GPAA)

SCM

Special Conditions of Contract

Special Condition of Contract

General Notes

The purpose of this Special Conditions of Contract (SCC) is to:

- (i) Draw special attention to certain special conditions applicable to Bids, Contracts, Agreements and Orders of the Government Pensions Administration Agency (GPAA); and
- (ii) To ensure that all bidders are familiar with the special provisions, requirements and conditions that will be applicable in the undertaking of the project and which will form part of the contract documentation and of which due cognisance must be taken in the bidding process.

In this document words in the singular also mean in the plural and vice versa and words in the masculine also mean in the feminine and neuter.

The General Conditions of Contract (GCC) also forms part of all bidding documents and must be read in conjunction with this Special Conditions of Contract.

Whenever there is a conflict between the GCC and the SCC, the provisions in the SCC shall prevail.

1.1. Bid Submission

- 1.1.1. Bidders will be permitted to submit bids by:
Post: Private Bag X63, Pretoria, 0001 or
Hand: 34 Hamilton Street, Arcadia, Pretoria
- 1.1.2. Closing date: **24 October 2016**
- 1.1.3. Closing time: **11:00 am**.
- 1.1.4. Compulsory briefing session will take place on Friday, 07 October 2016 at 34 Hamilton Street, Arcadia, Pretoria at 10:00am. **Late arrivals will not be permitted.**

1.2. Validity of Bids

- 1.2.1. Bidders are required to submit bids valid for **120** days.

1.3. Bidding process.

- 1.3.1. Suppliers are requested to submit their proposal in separate envelopes, with the technical proposal separated from the price proposal.
- 1.3.2. A minimum number of **five (5) copies** of technical proposals plus one (1) original (Standard bid documents) together with **one (1) copy** of pricing proposals must be submitted in separate envelopes with originals clearly marked as such.
- 1.3.3. Contractor need to show at least five (5) references sites.
- 1.3.4. Workmanship should be guaranteed for at least twelve (12) months after installation.
- 1.3.5. Failure to comply with the requirements as stipulated in the TOR will be disqualified.

-
- 1.3.6. Recommended service providers will be subjected to security screening.

1.4. Late Bids

- 1.4.1. Bids received after the time stipulated will not be considered. They will be posted back to the bidder un-opened.

1.5. Clarification or Alterations of Bids

- 1.5.1. Bidders will not be requested or permitted to alter their bids after the deadline for receipt of bids.
- 1.5.2. Requests for clarification may be needed to evaluate bids and the bidder's responses should be made in writing.

1.6. Completeness of Documentation

- 1.6.1. It will be ascertained whether bids:
- a. Include original tax clearance certificates
 - b. Have been properly signed and completed
 - c. Are accompanied by the required securities
 - d. Are substantially responsive to the bidding documents
 - e. Are generally in order.
- 1.6.2. If a bid is not substantially responsive, that is, it contains material deviations from or reservations to the terms, conditions and specifications in the bidding documents, it will not be considered further.
- 1.6.3. The bidder will not be permitted to correct or withdraw material deviations or reservations once bids have been opened.

1.7. Rejection of all Bids

The GPAA reserves the right to reject of all bids if and when deemed necessary. This is justified when there is lack of effective competition, or bids are not substantially responsive.

1.8. Associations between Consultants

- 1.8.1. Consultants may associate with each other to complement their respective areas of expertise, or for other reasons. Such an association may be for the long term (independent of any particular assignment) or for a specific assignment. The association may take the form of a joint venture or a sub consultancy.

1.9. Risk assessment

Appointment of the successful bidders will be subject to positive risk assessment outcome

Annexure B

(GPAA)

GCC

General Conditions of Contract

GPAA PROCUREMENT: GENERAL CONDITIONS OF CONTRACT

The purpose of this Annexure is to:

- i. Draw special attention to certain general conditions applicable to GPAA bids, contracts and orders; and
 - ii. To ensure that clients be familiar with regard to the rights and obligations of all parties involved in doing business with GPAA.
- In this document words in the singular also mean in the plural and vice versa and words in the masculine also mean in the feminine and neuter.
 - The General Conditions of Contract will form part of all bid documents and may not be amended.
 - Special Conditions of Contract (SCC) relevant to a specific bid should be compiled separately for every bid if applicable and will supplement the General Conditions of Contract. Whenever there is a conflict, the provisions in the SCC shall prevail.

TABLE OF CLAUSES

1. Definitions
2. Application
3. General
4. Standards
5. Use of contract documents and information; inspection
6. Patent rights
7. Performance security
8. Inspections, tests and analysis
9. Packing
10. Delivery and documents
11. Insurance
12. Transportation
13. Incidental services
14. Spare parts
15. Warranty
16. Payment
17. Prices
18. Contract amendments
19. Assignment
20. Subcontracts
21. Delays in the supplier's performance
22. Penalties
23. Termination for default
24. Dumping and countervailing duties
25. Force Majeure
26. Termination for insolvency
27. Settlement of disputes
28. Limitation of liability
29. Governing language
30. Applicable law
31. Notices
32. Taxes and duties

1.1. DEFINITIONS

-
- 1.2. The following terms shall be interpreted as indicated:
 - 1.3. **“Closing time”** means the date and hour specified in the bidding documents for the receipt of bids.
 - 1.4. **“Contract”** means the written agreement entered into between the purchaser and the supplier, as recorded in the contract form signed by the parties, including all attachments and appendices thereto and all documents incorporated by reference therein.
 - 1.5. **“Contract price”** means the price payable to the supplier under the contract for the full and proper performance of his contractual obligations.
 - 1.6. **“Corrupt practice”** means the offering, giving, receiving, or soliciting of anything of value to influence the action of a public employee in the procurement process or in contract execution.
 - 1.7. **“Countervailing duties”** are imposed in cases where an enterprise abroad is subsidized by its GPAA and encouraged to market its products internationally.
 - 1.8. **“Country of origin”** means the place where the goods were mined, grown or produced or from which the services are supplied. Goods are produced when, through manufacturing, processing or substantial and major assembly of components, a commercially recognized new product results that is substantially different in basic characteristics or in purpose or utility from its components.
 - 1.9. **“Day”** means calendar day.
 - 1.10. **“Delivery”** means delivery in compliance of the conditions of the contract or order.
 - 1.11. **“Delivery ex stock”** means immediate delivery directly from stock actually on hand.
 - 1.12. **“Delivery into consignees store or to his site”** means delivered and unloaded in the specified store or depot or on the specified site in compliance with the conditions of the contract or order, the supplier bearing all risks and charges involved until the supplies are so delivered and a valid receipt is obtained.
 - 1.13. **“Dumping”** occurs when a private enterprise abroad market its goods on own initiative in the RSA at lower prices than that of the country of origin and which have the potential to harm the local industries in the RSA.
 - 1.14. **“Force majeure”** means an event beyond the control of the supplier and not involving the supplier’s fault or negligence and not foreseeable. Such events may include, but is not restricted to, acts of the purchaser in its sovereign capacity, wars or revolutions, fires, floods, epidemics, quarantine restrictions and freight embargoes.
 - 1.15. **“Fraudulent practice”** means a misrepresentation of facts in order to influence a procurement process or the execution of a contract to the detriment of any bidder, and includes collusive practice among bidders (prior to or after bid submission) designed to establish bid prices at artificial non-competitive levels and to deprive the bidder of the benefits of free and open competition.
 - 1.16. **“GCC”** means the General Conditions of Contract.
 - 1.17. **“Goods”** means all of the equipment, machinery, and/or other materials that the supplier is required to supply to the purchaser under the contract

-
- 1.18. **“Imported content”** means that portion of the bidding price represented by the cost of components, parts or materials which have been or are still to be imported (whether by the supplier or his subcontractors) and which costs are inclusive of the costs abroad, plus freight and other direct importation costs such as landing costs, dock dues, import duty, sales duty or other similar tax or duty at the South African place of entry as well as transportation and handling charges to the factory in the Republic where the supplies covered by the bid will be manufactured.
 - 1.19. **“Local content”** means that portion of the bidding price which is not included in the imported content provided that local manufacture does take place.
 - 1.20. **“Manufacture”** means the production of products in a factory using labour, materials, components and machinery and includes other related value-adding activities.
 - 1.21. **“Order”** means an employee written order issued for the supply of goods for works or the rendering of a service.
 - 1.22. **“Project site,”** where applicable, means the place indicated in bidding documents.
 - 1.23. **“Purchaser”** means the organization purchasing the goods.
 - 1.24. **“Republic”** means the Republic of South Africa.
 - 1.25. **“SCC”** means the Special Conditions of Contract.
 - 1.26. **“Services”** means those functional services ancillary to the supply of the goods, such as transportation and any other incidental services, such as installation, commissioning, provision of technical assistance, training, catering, gardening, security, maintenance and other such obligations of the supplier covered under the contract.
 - 1.27. **“Written”** or “in writing” means handwritten in ink or any form of 96 electronic or mechanical writing.

2. APPLICATION

- 2.1. These general conditions are applicable to all bids, contracts and orders including bids for functional and professional services, sales, hiring, letting and the granting or acquiring of rights, but excluding immovable property, unless otherwise indicated in the bidding documents.
- 2.2. Where applicable, special conditions of contract are also laid down to cover specific supplies, services or works.
- 2.3. Where such special conditions of contract are in conflict with these general conditions, the special conditions shall apply.

3. GENERAL

- 3.1. Unless otherwise indicated in the bidding documents, the purchaser shall not be liable for any expense incurred in the preparation and submission of a bid. Where applicable a non-refundable fee for documents may be charged.

-
- 3.2. With certain exceptions, invitations to bid are only published in the State Tender Bulletin. The State Tender Bulletin may be obtained directly from the Government Printer, Private Bag X85, Pretoria 0001, or accessed electronically from www.employee.gov.za.

4. STANDARDS

- 4.1. The goods supplied shall conform to the standards mentioned in the bidding documents and specifications.

5. USE OF CONTRACT DOCUMENTS AND INFORMATION; INSPECTION

- 5.1. The supplier shall not, without the purchaser's prior written consent, disclose the contract, or any provision thereof, or any specification, plan, drawing, pattern, sample, or information furnished by or on behalf of the purchaser in connection therewith, to any person other than a person employed by the supplier in the performance of the contract. Disclosure to any such employed person shall be made in confidence and shall extend only so far as may be necessary for purposes of such performance.
- 5.2. The supplier shall not, without the purchaser's prior written consent, make use of any document or information mentioned in GCC clause 5.1 except for purposes of performing the contract.
- 5.3. Any document, other than the contract itself mentioned in GCC clause 5.1 shall remain the property of the purchaser and shall be returned (all copies) to the purchaser on completion of the supplier's performance under the contract if so required by the purchaser.
- 5.4. The supplier shall permit the purchaser to inspect the supplier's records relating to the performance of the supplier and to have them audited by auditors appointed by the purchaser, if so required by the purchaser.

6. PATENT RIGHTS

- 6.1. The supplier shall indemnify the purchaser against all third-party claims of infringement of patent, trademark, or industrial design rights arising from use of the goods or any part thereof by the purchaser.

7. PERFORMANCE

- 7.1. Within thirty (30) days of receipt of the notification of contract award, the successful bidder shall furnish to the purchaser the performance **security** of the amount specified in SCC.
- 7.2. The proceeds of the performance security shall be payable to the purchaser as compensation for any loss resulting from the supplier's failure to complete his obligations under the contract.
- 7.3. The performance security shall be denominated in the currency of the contract, or in a freely convertible currency acceptable to the purchaser and shall be in one of the following forms:
- 7.3.1. A bank guarantee or an irrevocable letter of credit issued by a reputable bank located in the purchaser's country or abroad, acceptable to the purchaser, in the form provided in the bidding documents or another form acceptable to the purchaser; or
- 7.3.2. a cashier's or certified cheque

-
- 7.4. The performance security will be discharged by the purchaser and returned to the supplier not later than thirty (30) days following the date of completion of the supplier's performance obligations under the contract, including any warranty obligations, unless otherwise specified in SCC.

8. INSPECTIONS, TESTS AND ANALYSES

- 8.1. All pre-bidding testing will be for the account of the bidder.
- 8.2. If it is a bid condition that supplies to be produced or services to be rendered should at any stage during production or execution or on completion be subject to inspection, the premises of the bidder or contractor shall be open, at all reasonable hours, for inspection by a representative of the Department or an organization acting on behalf of the Department.
- 8.3. If there is no inspection requirements indicated in the bidding documents and no mention is made in the contract, but during the contract period it is decided that inspections shall be carried out, the purchaser shall itself make the necessary arrangements, including payment arrangements with the testing Energy Board concerned.
- 8.4. If the inspections, tests and analyses referred to in clauses 8.2 and 8.3 show the supplies to be in accordance with the contract requirements, the cost of the inspections, tests and analyses shall be defrayed by the purchaser.
- 8.5. Where the supplies or services referred to in clauses 8.2 and 8.3 do not comply with the contract requirements, irrespective of whether such supplies or services are accepted or not, the cost in connection with these inspections, tests or analyses shall be defrayed by the supplier.
- 8.6. Supplies and services which are referred to in clauses 8.2 and 8.3 and which do not comply with the contract requirements may be rejected.
- 8.7. Any contract supplies may on or after delivery be inspected, tested or analyzed and may be rejected if found not to comply with the requirements of the contract. Such rejected supplies shall be held at the cost and risk of the supplier who shall, when called upon, remove them immediately at his own cost and forthwith substitute them with supplies which do comply with the requirements of the contract. Failing such removal the rejected supplies shall be returned at the suppliers cost and risk. Should the supplier fail to provide the substitute supplies forthwith, the purchaser may, without giving the supplier further opportunity to substitute the rejected supplies, purchase such supplies as may be necessary at the expense of the supplier.
- 8.8. The provisions of clauses 8.4 to 8.7 shall not prejudice the right of the purchaser to cancel the contract on account of a breach of the conditions thereof, or to act in terms of Clause 23 of GCC.

9. PACKING

- 9.1. The supplier shall provide such packing of the goods as is required to prevent their damage or deterioration during transit to their final destination, as indicated in the contract. The packing shall be sufficient to withstand, without limitation, rough handling during transit and exposure to extreme temperatures, salt and precipitation during transit, and open storage. Packing, case size and weights shall take into consideration, where appropriate, the remoteness of the goods' final destination and the absence of heavy handling facilities at all points in transit.

9.2. The packing, marking, and documentation within and outside the packages shall comply strictly with such special requirements as shall be expressly provided for in the contract, including additional requirements, if any, specified in SCC, and in any subsequent instructions ordered by the purchaser.

10. **DELIVERY OF DOCUMENTS**

10.1. Delivery of the goods shall be made by the supplier in accordance with the terms specified in the contract. The details of shipping and/or other documents to be furnished by the supplier are specified in SCC.

10.2. Documents to be submitted by the supplier are specified in SCC.

11. **INSURANCE**

11.1. The goods supplied under the contract shall be fully insured in a freely convertible currency against loss or damage incidental to manufacture or acquisition, transportation, storage and delivery in the manner specified in the SCC.

12. **TRANSPORTATION**

12.1. Should a price other than an all-inclusive delivered price be required, this shall be specified in the SCC.

13. **INCIDENTAL SERVICES**

13.1. The supplier may be required to provide any or all of the following services, including additional services, if any, specified in SCC:

- a. performance or supervision of on-site assembly and/or commissioning of the supplied goods;
- b. furnishing of tools required for assembly and/or maintenance of the supplied goods;
- c. furnishing of a detailed operations and maintenance manual for each appropriate unit of the supplied goods;
- d. performance or supervision or maintenance and/or repair of the supplied goods, for a period of time agreed by the parties, provided that this service shall not relieve the supplier of any warranty obligations under this contract; and
- e. training of the purchaser's personnel, at the supplier's plant and/or on-site, in assembly, start-up, operation, maintenance, and/or repair of the supplied goods.

13.2. Prices charged by the supplier for incidental services, if not included in the contract price for the goods, shall be agreed upon in advance by the parties and shall not exceed the prevailing rates charged to other parties by the supplier for similar services.

14. **SPARE PARTS**

14.1. As specified in SCC, the supplier may be required to provide any or all of the following materials, notifications, and information pertaining to spare parts manufactured or distributed by the supplier:

-
- a. such spare parts as the purchaser may elect to purchase from the supplier, provided that this election shall not relieve the supplier of any warranty obligations under the contract; and
 - b. in the event of termination of production of the spare parts:
 - i. Advance notification to the purchaser of the pending termination, in sufficient time to permit the purchaser to procure needed requirements; and
 - ii. Following such termination, furnishing at no cost to the purchaser, the blueprints, drawings, and specifications of the spare parts, if requested.

15. **WARRANTY**

- 15.1. The supplier warrants that the goods supplied under the contract are new, unused, of the most recent or current models, and that they incorporate all recent improvements in design and materials unless provided otherwise in the contract. The supplier further warrants that all goods supplied under this contract shall have no defect, arising from design, materials, or workmanship (except when the design and/or material is required by the purchaser's specifications) or from any act or omission of the supplier, that may develop under normal use of the supplied goods in the conditions prevailing in the country of final destination.
- 15.2. This warranty shall remain valid for twelve (12) months after the goods, or any portion thereof as the case may be, have been delivered to and accepted at the final destination indicated in the contract, or for eighteen (18) months after the date of shipment from the port or place of loading in the source country, whichever period concludes earlier, unless specified otherwise in SCC.
- 15.3. The purchaser shall promptly notify the supplier in writing of any claims arising under this warranty.
- 15.4. Upon receipt of such notice, the supplier shall, within the period specified in SCC and with all reasonable speed, repair or replace the defective goods or parts thereof, without costs to the purchaser.
- 15.5. Upon receipt of such notice, the supplier shall, within the period specified in SCC and with all reasonable speed, repair or replace the defective goods or parts thereof, without costs to the purchaser.
- 15.6. If the supplier, having been notified, fails to remedy the defect(s) within the period specified in SCC, the purchaser may proceed to take such remedial action as may be necessary, at the supplier's risk and expense and without prejudice to any other rights which the purchaser may have against the supplier under the contract.

16. **PAYMENT**

- 16.1. The method and conditions of payment to be made to the supplier under this contract shall be specified in SCC.
- 16.2. The supplier shall furnish the purchaser with an invoice accompanied by a copy of the delivery note and upon fulfillment of other obligations stipulated in the contract.
- 16.3. Payments shall be made promptly by the purchaser, but in no case later than thirty (30) days after submission of an invoice or claim by the supplier.
- 16.4. Payment will be made in Rand unless otherwise stipulated in SCC.

17. **PRICES**

- 17.1. Prices charged by the supplier for goods delivered and services performed under the contract shall not vary from the prices quoted by the supplier in his bid, with the exception of any price adjustments authorized in SCC or in the purchaser's request for bid validity extension, as the case may be.

18. **CONTRACT AMENDMENTS**

- 18.1. No variation in or modification of the terms of the contract shall be made except by written amendment signed by the parties concerned.

19. **ASSIGNMENT**

- 19.1. The supplier shall not assign, in whole or in part, its obligations to perform under the contract, except with the purchaser's prior written consent.

20. **SUBCONTRACTS**

- 20.1. The supplier shall notify the purchaser in writing of all subcontracts awarded under this contract if not already specified in the bid. Such notification, in the original bid or later, shall not relieve the supplier from any liability or obligation under the contract.

21. **DELAYS IN THE SUPPLIERS PERFORMANCE**

- 21.1. Delivery of the goods and performance of services shall be made by the supplier in accordance with the time schedule prescribed by the purchaser in the contract.

- 21.2. If at any time during performance of the contract, the supplier or its subcontractor(s) should encounter conditions impeding timely delivery of the goods and performance of services, the supplier shall promptly notify the purchaser in writing of the fact of the delay, its likely duration and its cause(s). As soon as practicable after receipt of the supplier's notice, the purchaser shall evaluate the situation and may at his discretion extend the supplier's time for performance, with or without the imposition of penalties, in which case the extension shall be ratified by the parties by amendment of contract.

- 21.3. No provision in a contract shall be deemed to prohibit the obtaining of supplies or services from a national department, provincial department, or local authorities.

- 21.4. The right is reserved to procure outside of the contract small quantities or to have minor essential services executed if an emergency arises, the supplier's point of supply is not situated at or near the place where the supplies are required, or the supplier's services are not readily available.

- 21.5. Except as provided under GCC Clause 25, a delay by the supplier in the performance of its delivery obligations shall render the supplier liable to the imposition of penalties, pursuant to GCC Clause 22, unless an extension of time is agreed upon pursuant to GCC Clause 21.2 without the application of penalties.

- 21.6. Upon any delay beyond the delivery period in the case of supplies contract, the purchaser shall, without cancelling the contract, be entitled to purchase supplies of a similar quality and up to the same quantity in substitution of the goods not supplied in conformity with the contract and to return any goods delivered later at the supplier's expense and risk, or to cancel the contract and buy such goods

as may be required to complete the contract and without prejudice to his other rights, be entitled to claim damages from the supplier.

22. PENALTIES

- 22.1. Subject to GCC Clause 25, if the supplier fails to deliver any or all of the goods or to perform the services within the period(s) specified in the contract, the purchaser shall, without prejudice to its other remedies under the contract, deduct from the contract price, as a penalty, a sum calculated on the delivered price of the delayed goods or unperformed services using the current prime interest rate calculated for each day of the delay until actual delivery or performance. The purchaser may also consider termination of the contract pursuant to GCC Clause 23.

23. TERMINATION FOR DEFAULT

- 23.1. The purchaser, without prejudice to any other remedy for breach of contract, by written notice of default sent to the supplier, may terminate this contract in whole or in part:
- a. If the supplier fails to deliver any or all of the goods within the period(s) specified in the contract, or within any extension thereof granted by the purchaser pursuant to GCC Clause 21.2;
 - b. If the Supplier fails to perform any other obligation(s) under the contract; or
 - c. If the supplier, in the judgment of the purchaser, has engaged in corrupt or fraudulent practices in competing for or in executing the contract.
- 23.2. In the event the purchaser terminates the contract in whole or in part, the purchaser may procure, upon such terms and in such manner as it deems appropriate, goods, works or services similar to those undelivered, and the supplier shall be liable to the purchaser for any excess costs for such similar goods, works or services. However, the supplier shall continue performance of the contract to the extent not terminated.

24. ANTI-DUMPING AND COUNTERVAILING DUTIES AND RIGHTS

- 24.1. When, after the date of bid, provisional payments are required, or antidumping or countervailing duties are imposed, or the amount of a provisional payment or anti-dumping or countervailing right is increased in respect of any dumped or subsidized import, the State is not liable for any amount so required or imposed, or for the amount of any such increase. When, after the said date, such a provisional payment is no longer required or any such anti-dumping or countervailing right is abolished, or where the amount of such provisional payment or any such right is reduced, any such favourable difference shall on demand be paid forthwith by the contractor to the State or the State may deduct such amounts from moneys (if any) which may otherwise be due to the contractor in regard to supplies or services which he delivered or rendered, or is to deliver or render in terms of the contract or any other contract or any other amount which may be due to him.

25. FORCE MAJEURE

- 25.1. Notwithstanding the provisions of GCC Clauses 22 and 23, the supplier shall not be liable for forfeiture of its performance security, damages, or termination for default if and to the extent that his delay in performance or other failure to perform his obligations under the contract is the result of an event of force majeure.
- 25.2. If a force majeure situation arises, the supplier shall promptly notify the purchaser in writing of such condition and the cause thereof. Unless otherwise directed by the purchaser in writing, the supplier shall continue to perform its obligations under the contract as far as is reasonably practical, and shall seek all reasonable alternative means for performance not prevented by the force majeure event.

26. TERMINATION FOR INSOLVENCY

- 26.1. The purchaser may at any time terminate the contract by giving written notice to the supplier if the supplier becomes bankrupt or otherwise insolvent. In this event, termination will be without compensation to the supplier, provided that such termination will not prejudice or affect any right of action or remedy which has accrued or will accrue thereafter to the purchaser.

27. SETTLEMENT OF DISPUTES

- 27.1. If any dispute or difference of any kind whatsoever arises between the purchaser and the supplier in connection with or arising out of the contract, the parties shall make every effort to resolve amicably such dispute or difference by mutual consultation.
- 27.2. If, after thirty (30) days, the parties have failed to resolve their dispute or difference by such mutual consultation, then either the purchaser or the supplier may give notice to the other party of his intention to commence with mediation. No mediation in respect of this matter may be commenced unless such notice is given to the other party.
- 27.3. Should it not be possible to settle a dispute by means of mediation, it may be settled in a South African court of law.
- 27.4. Mediation proceedings shall be conducted in accordance with the rules of procedure specified in the SCC.
- 27.5. Notwithstanding any reference to mediation and/or court proceedings herein,
a.the parties shall continue to perform their respective obligations under the contract unless they otherwise agree; and
b.the purchaser shall pay the supplier any monies due the supplier.
- 27.6. Except in cases of criminal negligence or wilful misconduct, and in the case of infringement pursuant to Clause 6.

28. LIMITATION OF LIABILITY

- 28.1. The supplier shall not be liable to the purchaser, whether in contract, tort, or otherwise, for any indirect or consequential loss or damage, loss of use, loss of production, or loss of profits or interest costs, provided that this exclusion shall not apply to any obligation of the supplier to pay penalties and/or damages to the purchaser.
- 28.2. The aggregate liability of the supplier to the purchaser, whether under the contract, in tort or otherwise, shall not exceed the total contract price, provided that this limitation shall not apply to the cost of repairing or replacing defective equipment.

29. GOVERNING LANGUAGE

- 29.1. The contract shall be written in English. All correspondence and other documents pertaining to the contract that is exchanged by the parties shall also be written in English.

30. APPLICABLE LAW

30.1. The contract shall be interpreted in accordance with South African laws, unless otherwise specified in SCC.

31. **NOTICES**

31.1. Every written acceptance of a bid shall be posted to the supplier concerned by registered or certified mail and any other notice to him shall be posted by ordinary mail to the address furnished in his bid or to the address notified later by him in writing and such posting shall be deemed to be proper service of such notice.

31.2. The time mentioned in the contract documents for performing any act after such aforesaid notice has been given, shall be reckoned from the date of posting of such notice.

32. **TAXES AND DUTIES**

32.1. A foreign supplier shall be entirely responsible for all taxes, stamp duties, license fees, and other such levies imposed outside the purchaser's country.

32.2. A local supplier shall be entirely responsible for all taxes, duties, license fees, etc., incurred until delivery of the contracted goods to the purchaser.

32.3. No contract shall be concluded with any bidder whose tax matters are not in order. Prior to the award of a bid, the GPAA must be in possession of a tax clearance certificate, submitted by the bidder. This certificate must be an original issued by the South African Revenue Services.

4 SBD 3.1 Bill of Quantities.

Administrative compliance – Should the bidder fail to price on any of the items on the pricing schedule below, it will lead to automatic disqualification.

<p><u>BILL No 1</u></p> <p><u>ALTERATIONS AND RENOVATIONS</u></p> <p><u>D100 FEMALE BATHROOM</u></p> <p><u>PLUMBING</u></p> <p><u>PREAMBLES</u></p> <p><u>NOTES:</u> The Tenderer is advised to refer to the Model Trade Preambles before pricing this Bill uPVC pipes and fittings: Sewer and drainage pipes and fittings shall be jointed and sealed with butyl rubber rings uPVC pressure pipes and fittings: Pipes for water supply shall be of the class stated.</p> <p><u>Demolitions and Fixing</u> Taking out and removing piping, sanitary fittings, etc including disconnecting piping from fittings and making good floor and wall finishes (making good tiling and paintwork elsewhere).</p>					
1	Remove (5) five existing toilet pan and replace with (4) four new white ceramic toilet pan.	No	4		
2	Remove existing (5) five flush masters and replace with (4) four new FM1000 chromium plated flush master.	No	4		
3	Remove existing hand wash basin and replace with drop in white ceramic hand basin 580x485x200mm.	No	5		
4	Remove existing water tap and replace with new 15mm chromium plated square basin sink mixer.	No	5		
5	Hand basins to be connected to existing 50mm drainage with 40x40mm 'S' or 'P' trap.	No	5		
<p>CARRIED TO COLLECTION</p>					
<p>Section No. 2 Bill No. 1 Alterations and Renovations of D100 Female Bathroom</p>		<p>R</p>			

PAINTING				
PREAMBLES				
NOTES:				
The Tenderer is advised to refer to the Model Trade Preambles before pricing this Bill.				
PAINTWORK ETC TO NEW WORK				
Demolitions and Fixing				
6	Repaint ceiling with (1) one coat primer and PVA acrylic matt brilliant white final coat.	m ²	30	
7	Sand and repaint with (2) two coats, cubicle wooden styles & heads with gloss enamel black.	m ²	6	
8	Replace (5) five old cubicle doors, paint with (2) two coats wood primer and gloss brilliant white final coat 2032x813.	m ²	36	
9	Repaint plumbing pipes with gloss enamel cream.	m ²	3	
10	Repaint walls above wall tiles with Ivory Lace /gloss enamel cream.	m ²	25	
11	Replace and Varnish new main entrance internal door, 40 mm semi-solid walnut (2) two coats clear (egg shell) vanish 2032x813mm.	m ²	9	
TILING				
NOTES: The Tenderer is advised to refer to the Model Trade Preambles before pricing this Bill.				
SUPPLEMENTARY PREAMBLES				
Description of tiles shall be deemed to include straight and splayed cutting and waste.				
Demolitions and Fixing				
Ceramic wall and floor tiles delivered to site, fixed with TAL adhesive to plaster and flush pointed with tinted waterproofing jointing compound 600mm x 600mm x 8.6mm Thick Porcelain tiles includes delivery to site, add waste, laying and fixing.				
CARRIED TO COLLECTION		R		
Section No. 2				
Bill No. 1				
Alterations and Renovations of D100 Female Bathroom				

12	Remove existing floor tiles and replace with new 600x600mm with full body tile adhesive, black Porcelain tiles on floors and skirting 600x100mm.	m ²	80		
13	Remove existing wall tiles and replace with new 300x600mm with full body tile adhesive, white Porcelain tiles on walls and narrow width.	m ²	45		
14	Leave expansion joint and fill with grey sika flex 6x8mm dip.	m	12		
15	Install with full body tile adhesive, (1) one row of Mercury Petite boarder 300x 60mm.	m ²	16		
	<u>MASONRY</u>				
	<u>PREAMBLES</u>				
	<u>NOTES:</u>				
	The Tenderer is advised to refer to the Model Trade Preambles before pricing this Bill.				
	<u>BRICKWORK</u>				
16	Construct 1m ² parapet wall 1000x550x115mm for granite top and covering of pipes. Approved common hard burn bricks size 222 x 106 x 73mm or equal approved faced both sides in stretcher bond, laid in class (3) three cement mortar and plastered.	m ²	10		
	<u>FITTINGS / ACCESSORIES</u>				
	<u>PREAMBLES</u>				
	<u>NOTES:</u>				
	The Tenderer is advised to refer to the Model Trade Preambles before pricing this Bill.				
	<u>Demolitions and Fixing</u>				
17	Replace main entrance door aluminium wear plate 150x820mm, return spring and PVC / aluminium door relief vent 600x150mm.	No	1		
18	Replace new pictogram.	No	1		
19	Remove and Install mirror 4000x950mm.	No	1		
20	Install new Cubicle union chrome bolt indicators.	No	4		
	CARRIED TO COLLECTION	R			
	Section No. 2				
	Bill No. 1				
	Alterations and Renovations of D100 Female Bathroom				

21	Remove and install new 1x1m Chromium plated towel rail.	No	1		
22	Install new Granite Top white 4000 x550mm, vertical front 4000 x250mm, new vertical sides 2x600x250mm and skirting 4000x80mm.	No	1		
23	Install new aluminium door handle for main entrance to match existing. SABS approved.	No	1		
24	Remove and Install new light fitting.	No	1		
25	Install new under basin 10lts Kwikot instant prisma delux heater 1500w.	No	1		
26	Remove independent 2000x1200x600mm, single shelve double door melamine cabinet.	No	1		
27	Install new 3 Lever Mortise Lock for proposed storeroom.	No	1		
CARRIED TO COLLECTION		R			
Section No. 2					
Bill No. 1					
Alterations and Renovations of D100 Female Bathroom					

Section No 2

Alterations and Renovations

Bill No. 1

Alterations and Renovations of D100 Female Bathroom

COLLECTION

Total BROUGHT FORWARD from Page No. -2/-

-2/37-

-2/38-

-2/39-

-2/40-

CARRIED TO GENERAL SUMMARY R

Section No. 2

Bill No. 1

Alterations and Renovations of D100 Female Bathroom

<u>BILL No 2</u>			
<u>ALTERATIONS AND RENOVATIONS</u>			
<u>C113 FEMALE BATHROOM</u>			
<u>PLUMBING</u>			
<u>PREAMBLES</u>			
<u>NOTES:</u>			
The Tenderer is advised to refer to the Model Trade Preambles before pricing this Bill uPVC pipes and fittings: Sewer and drainage pipes and fittings shall be jointed and sealed with butyl rubber rings uPVC pressure pipes and fittings: Pipes for water supply shall be of the class stated.			
<u>Demolitions and Fixing</u>			
Taking out and removing piping, sanitary fittings, etc including disconnecting piping from fittings and making good floor and wall finishes (making good tiling and paintwork elsewhere).			
1	Remove existing toilet pan and replace with new Rapido white ceramic toilet pan.	No	3
2	Remove existing flush masters and replace with new FM1000 chromium plated flush master.	No	3
3	Remove existing hand wash basin and replace with drop in white ceramic hand basin 580x485x200mm.	No	3
4	Remove existing water tap and replace with new 15mm chromium plated square basin sink mixer.	No	3
5	Hand basins to be connected to existing 50mm drainage with 40x40mm 'S' or 'P' trap.	No	3
CARRIED TO COLLECTION		R	
Section No. 2			
Bill No. 2			
Alterations and Renovations of C113 Female Bathroom			

<u>PAINTING</u>				
<u>PREAMBLES</u>				
<u>NOTES:</u>				
The Tenderer is advised to refer to the Model Trade Preambles before pricing this Bill.				
<u>PAINTWORK ETC TO NEW WORK</u>				
<u>Demolitions and Fixing</u>				
6	Repaint ceiling with 1 coat primer and PVA acrylic matt brilliant white final coat.	m ²	30	
7	Sand and repaint cubicle wooden styles & heads with (2) two coats gloss enamel black.	m ²	4	
8	Replace 3 old cubicle doors, paint with (2) two coats wood primer and gloss brilliant white final coat. 2032x813mm.	m ²	12	
9	Repaint plumbing pipes with gloss enamel cream.	m ²	3	
10	Repaint walls above wall tiles with Ivory Lace /gloss enamel cream.	m ²	20	
11	Replace and Varnish new main entrance internal door, 40 mm semi-solid walnut (2) two coats clear (egg shell) vanish 2032x813mm.	m ²	9	
<u>TILING</u>				
NOTES: The Tenderer is advised to refer to the Model Trade Preambles before pricing this Bill.				
<u>SUPPLEMENTARY PREAMBLES</u>				
Description of tiles shall be deemed to include straight and splayed cutting and waste.				
<u>Demolitions and Fixing</u>				
Ceramic wall and floor tiles delivered to site, fixed with TAL adhesive to plaster and flush pointed with tinted waterproofing jointing compound 600mm x 600mm x 8.6mm Thick Porcelain tiles includes delivery to site, add waste, laying and fixing.				
CARRIED TO COLLECTION		R		
Section No. 2				
Bill No. 2				
Alterations and Renovations of C113 Female Bathroom				

12	Remove existing floor tiles and replace with new 600x600mm with full body tile adhesive, black Porcelain tiles on floors and skirting 600x100mm.	m ²	60		
13	Remove existing wall tiles and replace with new 300x600mm with full body tile adhesive, white Porcelain tiles on walls including narrow width.	m ²	30		
14	Leave expansion joint and fill with grey sika flex 6x8mm dip.	m	8		
15	Install with full body tile adhesive, (1) one row of Mercury Petite boarder 300x 60mm.	m ²	12		
	<u>MASONRY</u>				
	<u>PREAMBLES</u>				
	<u>NOTES:</u>				
	The Tenderer is advised to refer to the Model Trade Preambles before pricing this Bill.				
	<u>BRICKWORK</u>				
16	Construct 1m ² parapet wall 1000x550x115mm for granite top and covering of pipes. Approved common hard burn bricks size 222 x 106 x 73mm or equal approved faced both sides in stretcher bond, laid in class (3) three cement mortar and plastered.	m ²	4		
	<u>FITTINGS / ACCESSORIES</u>				
	<u>PREAMBLES</u>				
	<u>NOTES:</u>				
	The Tenderer is advised to refer to the Model Trade Preambles before pricing this Bill.				
	<u>Demolitions and Fixing</u>				
17	Replace main entrance door aluminium wear plate 150x820mm, return spring and PVC / aluminium door relief vent 600x150mm.	No	1		
18	Replace new pictogram.	No	1		
19	Remove and Install mirror 2300x950mm.	No	1		
20	Install new Cubicle union chrome bolt indicators.	No	3		
	CARRIED TO COLLECTION	R			
	Section No. 2				
	Bill No. 2				
	Alterations and Renovations of C113 Female Bathroom				

21	Remove and install new 1x1m Chromium plated towel rail.	No	1		
22	Install new Granite Top white 2300 x550mm, vertical front 2300 x250mm, new vertical sides 2x600x250mm and skirting 2300x80mm.	No	1		
23	Install new aluminium handle for main entrance, to match existing. SABS approved.	No	1		
24	Remove and Install new light fitting.	No	1		
25	Install new under basin 10lts Kwikot instant prisma delux heater 1500w.	No	1		
26	Remove independent 2000x1200x600mm, single shelve double door melamine cabinet.	No	1		
CARRIED TO COLLECTION		R			
Section No. 2					
Bill No. 2					
Alterations and Renovations of C113 Female Bathroom					

<p>Section No 2 Alterations and Renovations Bill No. 2 Alterations and Renovations of C113 Female Bathroom COLLECTION Total BROUGHT FORWARD from Page No. -2/42- -2/43- -2/44- -2/45-</p> <p style="text-align: center;">CARRIED TO GENERAL SUMMARY</p> <p>Section No. 2 Bill No. 2 Alterations and Renovations of C113 Female Bathroom</p>	R			
------------------------------------------------------------------------------------------------------------------------------------------------------------------------------------------------------------------------------------------------------------------------------------------------------------------------------------------------------------------------------------------------------------------	----------	--	--	--

BILL No 3				
ALTERATIONS AND RENOVATIONS				
C114 GENTS BATHROOM				
PLUMBING				
PREAMBLES				
NOTES:				
The Tenderer is advised to refer to the Model Trade Preambles before pricing this Bill uPVC pipes and fittings: Sewer and drainage pipes and fittings shall be jointed and sealed with butyl rubber rings uPVC pressure pipes and fittings: Pipes for water supply shall be of the class stated.				
Demolitions and Fixing				
Taking out and removing piping, sanitary fittings, etc including disconnecting piping from fittings and making good floor and wall finishes (making good tiling and paintwork elsewhere).				
1	Remove existing toilet pans and replace with new Rapido white ceramic toilet pan.	No	2	
2	Remove existing urinals and replace with new Louise white ceramic urinal.	No	1	
3	Remove existing flush masters and replace with new FM1000 chromium plated flush master for toilets.	No	2	
4	Remove existing flush masters and replace with new FJ 6000 chrome plate junior flush master for urinal.	No	1	
5	Remove existing hand wash basin and replace with drop in white hand basin 580x485x200mm.	No	2	
6	Remove existing water tap and replace with new 15mm chromium plated square basin sink mixer.	No	2	
7	Hand basins to be connected to existing 50mm drainage with 40x40mm 'S' or 'P' trap.	No	2	
CARRIED TO COLLECTION		R		
Section No. 2				
Bill No. 3				
Alterations and Renovations of C114 Male Bathroom				

PAINTING					
PREAMBLES					
NOTES:					
The Tenderer is advised to refer to the Model Trade Preambles before pricing this Bill.					
PAINTWORK ETC TO NEW WORK					
Demolitions and Fixing					
8	Repaint ceiling with (1) one coat primer and PVA acrylic matt brilliant white final coat.	m ²	20		
9	Sand and repaint cubicle wooden styles & heads with (2) two coats gloss enamel black.	m ²	4		
10	Replace (2) two old cubicle doors, paint with (2) two coats wood primer and gloss brilliant white final coat 2032x813mm.	m ²	18		
11	Repaint plumbing pipes with gloss enamel cream.	m ²	1		
12	Repaint walls above wall tiles with Ivory Lace /Gloss enamel cream.	m ²	35		
13	Replace and Varnish new main entrance internal door, 40 mm semi-solid walnut (2) two coats clear (egg shell) vanish 2032x813mm.	m ²	9		
TILING					
NOTES: The Tenderer is advised to refer to the Model Trade Preambles before pricing this Bill.					
SUPPLEMENTARY PREAMBLES					
Description of tiles shall be deemed to include straight and splayed cutting and waste.					
Demolitions and Fixing					
Ceramic wall and floor tiles delivered to site, fixed with TAL adhesive to plaster and flush pointed with tinted waterproofing jointing compound 600mm x 600mm x 8.6mm Thick Porcelain tiles includes delivery to site, add waste, laying and fixing.					
CARRIED TO COLLECTION		R			
Section No. 2					
Bill No. 3					
Alterations and Renovations of C114 Male Bathroom					

14	Remove existing floor tiles and replace with new 600x600mm black Porcelain tiles on floors and skirting 600x100mm.	m ²	60		
15	Remove existing wall tiles and replace with new 300x600mm with full body tile adhesive, white Porcelain walls tiles on walls, including narrow width.	m ²	30		
16	Leave expansion joint and fill neatly with grey sika flex 6x8mm dip.	m	12		
17	Install with full body tile adhesive, (1) one row of Mercury Petite boarder 300x 60mm.	m ²	8		
<u>MASONRY</u>					
<u>PREAMBLES</u>					
<u>NOTES:</u>					
The Tenderer is advised to refer to the Model Trade Preambles before pricing this Bill.					
<u>BRICKWORK</u>					
18	Construct 1m ² parapet wall 1000x550x115mm for granite top and covering of pipes. Approved common hard burn bricks size 222 x 106 x 73mm or equal approved faced both sides in stretcher bond, laid in class (3) three cement mortar and plastered.	m ²	2		
<u>FITTINGS / ACCESSORIES</u>					
<u>PREAMBLES</u>					
<u>NOTES:</u>					
The Tenderer is advised to refer to the Model Trade Preambles before pricing this Bill.					
<u>Demolitions and Fixing</u>					
19	Replace main entrance door aluminium wear plate 150x820mm, return spring and PVC / aluminium door relief vent 600x150mm.	No	1		
20	Replace new pictogram.	No	1		
21	Remove and Install mirror 1900x900mm.	No	1		
CARRIED TO COLLECTION R					
Section No. 2 Bill No. 3 Alterations and Renovations of C114 Male Bathroom					

22	Install new Cubicle union chrome bolt indicators.	No	2		
23	Install new Granite Top white 2000 x550mm, vertical front 2000 x250mm, new vertical sides 2x600x250mm and skirting 2000x80mm.	No	1		
24	Install aluminium handle for main entrance, to match existing. SABS approved.	No	1		
25	Remove and Install new light fitting.	No	1		
26	Install new under basin 10lts Kwikot instant prisma delux heater 1500w.	No	1		
CARRIED TO COLLECTION		R			
Section No. 2					
Bill No. 3					
Alterations and Renovations of C114 Male Bathroom					

<p>Section No 2 Alterations and Renovations Bill No. 3 Alterations and Renovations of C114 Male Bathroom COLLECTION Total BROUGHT FORWARD from Page No. -2/47- -2/48- -2/49- -2/50-</p> <p style="text-align: center;">CARRIED TO GENERAL SUMMARY</p> <p>Section No. 2 Bill No. 3 Alterations and Renovations of C114 Male Bathroom</p>	R			
--------------------------------------------------------------------------------------------------------------------------------------------------------------------------------------------------------------------------------------------------------------------------------------------------------------------------------------------------------------------------------------------------------------	----------	--	--	--

BILL No 4				
ALTERATIONS AND RENOVATIONS				
E004 GENTS BATHROOM				
PLUMBING				
PREAMBLES				
NOTES:				
The Tenderer is advised to refer to the Model Trade Preambles before pricing this Bill uPVC pipes and fittings: Sewer and drainage pipes and fittings shall be jointed and sealed with butyl rubber rings uPVC pressure pipes and fittings: Pipes for water supply shall be of the class stated.				
Demolitions and Fixing				
Taking out and removing piping, sanitary fittings, etc including disconnecting piping from fittings and making good floor and wall finishes (making good tiling and paintwork elsewhere).				
1	Remove existing toilet pans and replace with new ceramic white toilet pan.	No	2	
2	Remove existing urinals and replace with new white ceramic white urinal.	No	2	
3	Remove existing flush masters and replace with new FM1000 chromium plated flush master for toilets.	No	2	
4	Remove existing flush masters and replace with new FJ 6000 chromium plated junior flush master for urinals.	No	2	
5	Remove existing hand wash basin and replace with drop in white hand basin 580x485x200mm.	No	2	
6	Remove existing water tap and replace with new 15mm chromium plated square basin sink mixer.	No	2	
7	Hand basins to be connected to existing 50mm drainage with 40x40mm 'S' or 'P' trap.	No	2	
CARRIED TO COLLECTION		R		
Section No. 2				
Bill No. 4				
Alterations and Renovations of E004 Male Bathroom				

<u>PAINTING</u>					
<u>PREAMBLES</u>					
<u>NOTES:</u>					
The Tenderer is advised to refer to the Model Trade Preambles before pricing this Bill.					
<u>PAINTWORK ETC TO NEW WORK</u>					
<u>Demolitions and Fixing</u>					
8	Repaint ceiling with (1) one coat primer and PVA acrylic matt brilliant white final coat.	m ²	20		
9	Sand and repaint cubicle wooden styles & heads with (2) coats gloss enamel black.	m ²	4		
10	Replace (2) two old cubicle doors, paint with (2) two coats wood primer and Gloss brilliant white final coat 2032x813mm.	m ²	9		
11	Repaint plumbing pipes with gloss enamel cream.	m ²	1		
12	Repaint walls above wall tiles with Ivory Lace /Gloss enamel cream.	m ²	30		
13	Replace and Varnish new main entrance internal door, 40 mm semi-solid walnut (2) two coats clear (egg shell) vanish 2032x813mm.	m ²	9		
<u>TILING</u>					
NOTES: The Tenderer is advised to refer to the Model Trade Preambles before pricing this Bill.					
<u>SUPPLEMENTARY PREAMBLES</u>					
Description of tiles shall be deemed to include straight and splayed cutting and waste.					
<u>Demolitions and Fixing</u>					
Ceramic wall and floor tiles delivered to site, fixed with TAL adhesive to plaster and flush pointed with tinted waterproofing jointing compound 600mm x 600mm x 8.6mm Thick Porcelain tiles includes delivery to site, add waste, laying and fixing.					
CARRIED TO COLLECTION		R			
Section No. 2					
Bill No. 4					
Alterations and Renovations of E004 Male Bathroom					

14	Remove existing floor tiles and replace with new 600x600mm with full body tile adhesive, black Porcelain tiles, on floors and skirting 600x100mm.	m ²	60		
15	Remove existing wall tiles and replace with new 300x600mm with full body tile adhesive, white Porcelain tiles on walls including narrow width.	m ²	30		
16	Leave expansion joint and fill neatly with grey sika flex 6x8mm dip.	m	12		
17	Install with full body tile adhesive, (1) one row of Mercury Petite boarder 300x 60mm.	m ²	8		
	<u>MASONRY</u>				
	<u>PREAMBLES</u>				
	<u>NOTES:</u>				
	The Tenderer is advised to refer to the Model Trade Preambles before pricing this Bill.				
	<u>BRICKWORK</u>				
18	Construct 1m ² parapet wall 1000x550x115mm for granite top and covering of pipes. Approved common hard burn bricks size 222 x 106 x 73mm or equal approved faced both sides in stretcher bond, laid in class (3) three cement mortar and plastered.	m ²	2		
	<u>FITTINGS / ACCESSORIES</u>				
	<u>PREAMBLES</u>				
	<u>NOTES:</u>				
	The Tenderer is advised to refer to the Model Trade Preambles before pricing this Bill.				
	<u>Demolitions and Fixing</u>				
19	Replace main entrance door aluminium wear plate 150x820mm, return spring and PVC / aluminium door relief vent 600x150mm.	No	1		
20	Replace new pictogram.	No	1		
	Remove and Install mirror 1900x900mm.	No	1		
21					
	CARRIED TO COLLECTION	R			
	Section No. 2 Bill No. 4 Alterations and Renovations of E004 Male Bathroom				

22	Install new Cubicle union chrome bolt indicators.	No	2		
23	Install new Granite Top white 2000 x550mm, vertical front 2000 x250mm, new vertical sides 2x600x250mm and skirting 2000x80mm.	No	1		
24	Install aluminium handle for main entrance, to match the existing. SABS approved.	No	1		
25	Remove and Install new light fitting.	No	1		
26	Install new under basin 10lts Kwikot instant prisma delux heater 1500w.	No	1		
CARRIED TO COLLECTION					
Section No. 2					
Bill No. 4					
Alterations and Renovations of E004 Male Bathroom					

<p>Section No 2 Alterations and Renovations Bill No. 4 Alterations and Renovations of E004 Male Bathroom COLLECTION Total BROUGHT FORWARD from Page No. -2/52- -2/53- -2/54- -2/55-</p> <p style="text-align: center;">CARRIED TO GENERAL SUMMARY</p> <p>Section No. 2 Bill No. 4 Alterations and Renovations of E004 Male Bathroom</p>				
--------------------------------------------------------------------------------------------------------------------------------------------------------------------------------------------------------------------------------------------------------------------------------------------------------------------------------------------------------------------------------------------------------------	--	--	--	--

BILL No 5			
ALTERATIONS AND RENOVATIONS			
C106 FEMALE BATHROOM			
PLUMBING			
PREAMBLES			
NOTES:			
The Tenderer is advised to refer to the Model Trade Preambles before pricing this Bill uPVC pipes and fittings: Sewer and drainage pipes and fittings shall be jointed and sealed with butyl rubber rings uPVC pressure pipes and fittings: Pipes for water supply shall be of the class stated.			
Demolitions and Fixing			
Taking out and removing piping, sanitary fittings, etc including disconnecting piping from fittings and making good floor and wall finishes (making good tiling and paintwork elsewhere).			
1	Remove existing toilet pans and replace with new white ceramic toilet pans.		3
2	Remove existing flush masters and replace with new FM1000 chromium plated flush master.	No	3
3	Remove existing hand wash basins and replace with drop in white ceramic hand basin 580x485x200mm.	No	3
4	Remove existing water taps and replace with new 15mm chromium plated square basin sink mixer.	No	3
5	Hand basins to be connected to existing 50mm drainage with 40x40mm 'S' or 'P' trap.	No	3
CARRIED TO COLLECTION		R	
Section No. 2			
Bill No. 5			
Alterations and Renovations of C106 Female Bathroom			

<u>PAINTING</u>					
<u>PREAMBLES</u>					
<u>NOTES:</u>					
The Tenderer is advised to refer to the Model Trade Preambles before pricing this Bill.					
<u>PAINTWORK ETC TO NEW WORK</u>					
<u>Demolitions and Fixing</u>					
6	Repaint ceiling with (1) one coat primer and PVA acrylic matt brilliant white final coat.	m ²	30		
7	Sand and repaint with (2) two coats, cubicle wooden styles & heads with gloss enamel black.	m ²	6		
8	Replace (3) three old cubicle doors, paint with (2) two coats wood primer and gloss brilliant white final coat 2032x813.	m ²	27		
9	Repaint plumbing pipes with gloss enamel cream.	m ²	3		
10	Repaint walls above wall tiles with Ivory Lace /gloss enamel cream.	m ²	25		
11	Replace and Varnish new main entrance internal door, 40 mm semi-solid walnut (2) two coats clear (egg shell) vanish 2032x813mm.	m ²	9		
<u>TILING</u>					
NOTES: The Tenderer is advised to refer to the Model Trade Preambles before pricing this Bill.					
<u>SUPPLEMENTARY PREAMBLES</u>					
Description of tiles shall be deemed to include straight and splayed cutting and waste.					
<u>Demolitions and Fixing</u>					
Ceramic wall and floor tiles delivered to site, fixed with TAL adhesive to plaster and flush pointed with tinted waterproofing jointing compound 600mm x 600mm x 8.6mm Thick Porcelain tiles includes delivery to site, add waste, laying and fixing.					
CARRIED TO COLLECTION		R			
Section No. 2					
Bill No. 5					
Alterations and Renovations of C106 Female Bathroom					

12	Remove existing floor tiles and replace with new 600x600mm with full body tile adhesive, black Porcelain tiles on floors and skirting 600x100mm.	m ²	80		
13	Remove existing wall tiles and replace with new 300x600mm with full body tile adhesive, white Porcelain tiles on walls and narrow width.	m ²	45		
14	Leave expansion joint and fill with grey sika flex 6x8mm dip.	m	12		
15	Install with full body tile adhesive, (1) one row of Mercury Petite boarder 300x 60mm.	m ²	16		
<u>MASONRY</u>					
<u>PREAMBLES</u>					
<u>NOTES:</u>					
The Tenderer is advised to refer to the Model Trade Preambles before pricing this Bill.					
<u>BRICKWORK</u>					
16	Construct 1m ² parapet wall 1000x550x115mm for granite top and covering of pipes. Approved common hard burn bricks size 222 x 106 x 73mm or equal approved faced both sides in stretcher bond, laid in class (3) three cement mortar and plastered.	m ²	10		
<u>FITTINGS / ACCESSORIES</u>					
<u>PREAMBLES</u>					
<u>NOTES:</u>					
The Tenderer is advised to refer to the Model Trade Preambles before pricing this Bill.					
<u>Demolitions and Fixing</u>					
17	Replace main entrance door aluminium wear plate 150x820mm, return spring and PVC / aluminium door relief vent 600x150mm.	No	1		
18	Replace new pictogram.	No	1		
19	Remove and Install mirror 4000x950mm.	No	1		
20	Install new Cubicle union chrome bolt indicators.	No	3		
CARRIED TO COLLECTION		R			
Section No. 2					
Bill No. 5					
Alterations and Renovations of 106 Female Bathroom					

21	Remove and install new 1x1m Chromium plated towel rail.	No	1		
22	Install new Granite Top white 4000 x550mm, vertical front 4000 x250mm, new vertical sides 2x600x250mm and skirting 4000x80mm.	No	1		
23	Install new aluminium door handle for main entrance to match existing. SABS approved.	No	1		
24	Remove and Install new light fitting.	No	1		
25	Install new under basin 10lts Kwikot instant prisma delux heater 1500w.	No	1		
CARRIED TO COLLECTION		R			
Section No. 2					
Bill No. 5					
Alterations and Renovations of C106 Female Bathroom					

<p>Section No 2 Alterations and Renovations Bill No. 5 Alterations and Renovations of C106 Female Bathroom COLLECTION Total BROUGHT FORWARD from Page No. -2/- -2/57- -2/58- -2/59- -2/60-</p> <p style="text-align: center;">CARRIED TO GENERAL SUMMARY</p> <p>Section No. 2 Bill No. 5 Alterations and Renovations of C106 Female Bathroom</p>				
	R			

BILL No 6				
ALTERATIONS AND RENOVATIONS				
E102 GENTS BATHROOM				
PLUMBING				
PREAMBLES				
NOTES:				
The Tenderer is advised to refer to the Model Trade Preambles before pricing this Bill uPVC pipes and fittings: Sewer and drainage pipes and fittings shall be jointed and sealed with butyl rubber rings uPVC pressure pipes and fittings: Pipes for water supply shall be of the class stated.				
Demolitions and Fixing				
Taking out and removing piping, sanitary fittings, etc including disconnecting piping from fittings and making good floor and wall finishes (making good tiling and paintwork elsewhere).				
1	Remove existing toilet pans and replace with new Rapido white ceramic toilet pan.	No	2	
2	Remove existing urinals and replace with new Louise white ceramic urinal.	No	2	
3	Remove existing flush masters and replace with new FM1000 chromium plated flush master for toilets.	No	2	
4	Remove existing flush masters and replace with new FJ 6000 chrome plate junior flush master for urinal.	No	2	
5	Remove existing hand wash basin and replace with drop in white hand basin 580x485x200mm.	No	2	
6	Remove existing water tap and replace with new 15mm chromium plated square basin sink mixer.	No	2	
7	Hand basins to be connected to existing 50mm drainage with 40x40mm 'S' or 'P' trap.	No	2	
CARRIED TO COLLECTION		R		
Section No. 2				
Bill No. 6				
Alterations and Renovations of E102 Male Bathroom				

<u>PAINTING</u>					
<u>PREAMBLES</u>					
<u>NOTES:</u>					
The Tenderer is advised to refer to the Model Trade Preambles before pricing this Bill.					
<u>PAINTWORK ETC TO NEW WORK</u>					
<u>Demolitions and Fixing</u>					
8	Repaint ceiling with (1) one coat primer and PVA acrylic matt brilliant white final coat.	m ²	20		
9	Sand and repaint cubicle wooden styles & heads with (2) two coats gloss enamel black.	m ²	4		
10	Replace (2) two old cubicle doors, paint with (2) two coats wood primer and gloss brilliant white final coat 2032x813mm.	m ²	18		
11	Repaint plumbing pipes with gloss enamel cream.	m ²	1		
12	Repaint walls above wall tiles with Ivory Lace /Gloss enamel cream.	m ²	35		
13	Replace and Varnish new main entrance internal door, 40 mm semi-solid walnut (2) two coats clear (egg shell) vanish 2032x813mm.	m ²	9		
<u>TILING</u>					
NOTES: The Tenderer is advised to refer to the Model Trade Preambles before pricing this Bill.					
<u>SUPPLEMENTARY PREAMBLES</u>					
Description of tiles shall be deemed to include straight and splayed cutting and waste.					
<u>Demolitions and Fixing</u>					
Ceramic wall and floor tiles delivered to site, fixed with TAL adhesive to plaster and flush pointed with tinted waterproofing jointing compound 600mm x 600mm x 8.6mm Thick Porcelain tiles includes delivery to site, add waste, laying and fixing.					
CARRIED TO COLLECTION		R			
Section No. 2					
Bill No. 6					
Alterations and Renovations of E102 Male Bathroom					

14	Remove existing floor tiles and replace with new 600x600mm black Porcelain tiles on floors and skirting 600x100mm.	m ²	60		
15	Remove existing wall tiles and replace with new 300x600mm with full body tile adhesive, white Porcelain walls tiles on walls, including narrow width.	m ²	30		
16	Leave expansion joint and fill neatly with grey sika flex 6x8mm dip.	m	12		
17	Install with full body tile adhesive, (1) one row of Mercury Petite boarder 300x 60mm.	m ²	8		
<u>MASONRY</u>					
<u>PREAMBLES</u>					
<u>NOTES:</u>					
The Tenderer is advised to refer to the Model Trade Preambles before pricing this Bill.					
<u>BRICKWORK</u>					
18	Construct 1m ² parapet wall 1000x550x115mm for granite top and covering of pipes. Approved common hard burn bricks size 222 x 106 x 73mm or equal approved faced both sides in stretcher bond, laid in class (3) three cement mortar and plastered.	m ²	2		
<u>FITTINGS / ACCESSORIES</u>					
<u>PREAMBLES</u>					
<u>NOTES:</u>					
The Tenderer is advised to refer to the Model Trade Preambles before pricing this Bill.					
<u>Demolitions and Fixing</u>					
19	Replace main entrance door aluminium wear plate 150x820mm, return spring and PVC / aluminium door relief vent 600x150mm.	No	1		
20	Replace new pictogram.	No	1		
21	Remove and Install mirror 1900x900mm.	No	1		
CARRIED TO COLLECTION R					
Section No. 2 Bill No. 6 Alterations and Renovations of E102 Male Bathroom					

22	Install new Cubicle union chrome bolt indicators.	No	2		
23	Install new Granite Top white 2000 x550mm, vertical front 2000 x250mm, new vertical sides 2x600x250mm and skirting 2000x80mm.	No	1		
24	Install aluminium handle for main entrance, to match existing. SABS approved.	No	1		
25	Remove and Install new light fitting.	No	1		
26	Install new under basin 10lts Kwikot instant prisma delux heater 1500w.	No	1		
CARRIED TO COLLECTION		R			
Section No. 2					
Bill No. 6					
Alterations and Renovations of E102 Male Bathroom					

<p>Section No 2 Alterations and Renovations Bill No. 6 Alterations and Renovations of E102 Male Bathroom COLLECTION Total BROUGHT FORWARD from Page No. -2/62- -2/63- -2/64- -2/65-</p> <p style="text-align: center;">CARRIED TO GENERAL SUMMARY</p> <p>Section No. 2 Bill No. 6 Alterations and Renovations of E102 Male Bathroom</p>				
--------------------------------------------------------------------------------------------------------------------------------------------------------------------------------------------------------------------------------------------------------------------------------------------------------------------------------------------------------------------------------------------------------------	--	--	--	--

R

BILL No 7				
ALTERATIONS AND RENOVATIONS				
F103 GENTS BATHROOM				
PLUMBING				
PREAMBLES				
NOTES:				
The Tenderer is advised to refer to the Model Trade Preambles before pricing this Bill uPVC pipes and fittings: Sewer and drainage pipes and fittings shall be jointed and sealed with butyl rubber rings uPVC pressure pipes and fittings: Pipes for water supply shall be of the class stated.				
Demolitions and Fixing				
Taking out and removing piping, sanitary fittings, etc including disconnecting piping from fittings and making good floor and wall finishes (making good tiling and paintwork elsewhere).				
1	Remove existing toilet pans and replace with new ceramic white toilet pan.	No	2	
2	Remove existing urinals and replace with new white ceramic white urinal.	No	0	
3	Remove existing flush masters and replace with new FM1000 chromium plated flush master for toilets.	No	2	
4	Remove existing flush masters and replace with new FJ 6000 chromium plated junior flush master for urinals.	No	0	
5	Remove existing hand wash basin and replace with drop in white hand basin 580x485x200mm.	No	2	
6	Remove existing water tap and replace with new 15mm chromium plated square basin sink mixer.	No	2	
7	Hand basins to be connected to existing 50mm drainage with 40x40mm 'S' or 'P' trap.	No	2	
CARRIED TO COLLECTION		R		
Section No. 2				
Bill No. 7				
Alterations and Renovations of F103 Male Bathroom				

<u>PAINTING</u>					
<u>PREAMBLES</u>					
<u>NOTES:</u>					
The Tenderer is advised to refer to the Model Trade Preambles before pricing this Bill.					
<u>PAINTWORK ETC TO NEW WORK</u>					
<u>Demolitions and Fixing</u>					
8	Repaint ceiling with (1) one coat primer and PVA acrylic matt brilliant white final coat.	m ²	15		
9	Sand and repaint cubicle wooden styles & heads with (2) coats gloss enamel black.	m ²	4		
10	Replace (2) two old cubicle doors, paint with (2) two coats wood primer and Gloss brilliant white final coat 2032x813mm.	m ²	9		
11	Repaint plumbing pipes with gloss enamel cream.	m ²	1		
12	Repaint walls above wall tiles with Ivory Lace /Gloss enamel cream.	m ²	25		
13	Replace and Varnish new main entrance internal door, 40 mm semi-solid walnut (2) two coats clear (egg shell) vanish 2032x813mm.	m ²	9		
<u>TILING</u>					
NOTES: The Tenderer is advised to refer to the Model Trade Preambles before pricing this Bill.					
<u>SUPPLEMENTARY PREAMBLES</u>					
Description of tiles shall be deemed to include straight and splayed cutting and waste.					
<u>Demolitions and Fixing</u>					
Ceramic wall and floor tiles delivered to site, fixed with TAL adhesive to plaster and flush pointed with tinted waterproofing jointing compound 600mm x 600mm x 8.6mm Thick Porcelain tiles includes delivery to site, add waste, laying and fixing.					
CARRIED TO COLLECTION		R			
Section No. 2					
Bill No. 7					
Alterations and Renovations of F103 Male Bathroom					

14	Remove existing floor tiles and replace with new 600x600mm with full body tile adhesive, black Porcelain tiles, on floors and skirting 600x100mm.	m ²	30		
15	Remove existing wall tiles and replace with new 300x600mm with full body tile adhesive, white Porcelain tiles on walls including narrow width.	m ²	25		
16	Leave expansion joint and fill neatly with grey sika flex 6x8mm dip.	m	12		
17	Install with full body tile adhesive, (1) one row of Mercury Petite boarder 300x 60mm.	m ²	8		
	<u>MASONRY</u>				
	<u>PREAMBLES</u>				
	<u>NOTES:</u>				
	The Tenderer is advised to refer to the Model Trade Preambles before pricing this Bill.				
	<u>BRICKWORK</u>				
18	Construct 1m ² parapet wall 1000x550x115mm for granite top and covering of pipes. Approved common hard burn bricks size 222 x 106 x 73mm or equal approved faced both sides in stretcher bond, laid in class (3) three cement mortar and plastered.	m ²	2		
	<u>FITTINGS / ACCESSORIES</u>				
	<u>PREAMBLES</u>				
	<u>NOTES:</u>				
	The Tenderer is advised to refer to the Model Trade Preambles before pricing this Bill.				
	<u>Demolitions and Fixing</u>				
19	Replace main entrance door aluminium wear plate 150x820mm, return spring and PVC / aluminium door relief vent 600x150mm.	No	1		
20	Replace new pictogram.	No	1		
	Remove and Install mirror 1200x900mm.	No	1		
21					
	CARRIED TO COLLECTION	R			
	Section No. 2 Bill No. 7 Alterations and Renovations of F103 Male Bathroom				

22	Install new Cubicle union chrome bolt indicators.	No	2		
23	Install new Granite Top white 2000 x550mm, vertical front 2000 x250mm, new vertical sides 2x600x250mm and skirting 2000x80mm.	No	1		
24	Install aluminium handle for main entrance, to match the existing. SABS approved.	No	1		
25	Remove and Install new light fitting.	No	1		
26	Install new under basin 10lts Kwikot instant prisma delux heater 1500w.	No	1		
CARRIED TO COLLECTION					
Section No. 2					
Bill No. 7					
Alterations and Renovations of F103 Male Bathroom					

<p>Section No 2 Alterations and Renovations Bill No. 7 Alterations and Renovations of F103 Male Bathroom COLLECTION Total BROUGHT FORWARD from Page No. -2/67- -2/68- -2/69- -2/70-</p> <p style="text-align: center;">CARRIED TO GENERAL SUMMARY</p> <p>Section No. 2 Bill No. 7 Alterations and Renovations of F103 Male Bathroom</p>				
--------------------------------------------------------------------------------------------------------------------------------------------------------------------------------------------------------------------------------------------------------------------------------------------------------------------------------------------------------------------------------------------------------------	--	--	--	--

BILL No 8				
ALTERATIONS AND RENOVATIONS				
G001 FEMALE BATHROOM				
PLUMBING				
PREAMBLES				
NOTES:				
The Tenderer is advised to refer to the Model Trade Preambles before pricing this Bill uPVC pipes and fittings: Sewer and drainage pipes and fittings shall be jointed and sealed with butyl rubber rings uPVC pressure pipes and fittings: Pipes for water supply shall be of the class stated.				
Demolitions and Fixing				
Taking out and removing piping, sanitary fittings, etc including disconnecting piping from fittings and making good floor and wall finishes (making good tiling and paintwork elsewhere).				
1	Remove existing toilet pans and replace with new white ceramic toilet pans.		3	
2	Remove existing flush masters and replace with new FM1000 chromium plated flush master.	No	3	
3	Remove existing hand wash basins and replace with drop in white ceramic hand basin 580x485x200mm.	No	3	
4	Remove existing water taps and replace with new 15mm chromium plated square basin sink mixer.	No	3	
5	Hand basins to be connected to existing 50mm drainage with 40x40mm 'S' or 'P' trap.	No	3	
CARRIED TO COLLECTION		R		
Section No. 2				
Bill No. 8				
Alterations and Renovations of G001 Female Bathroom				

<u>PAINTING</u>					
<u>PREAMBLES</u>					
<u>NOTES:</u>					
The Tenderer is advised to refer to the Model Trade Preambles before pricing this Bill.					
<u>PAINTWORK ETC TO NEW WORK</u>					
<u>Demolitions and Fixing</u>					
6	Repaint ceiling with (1) one coat primer and PVA acrylic matt brilliant white final coat.	m ²	30		
7	Sand and repaint with (2) two coats, cubicle wooden styles & heads with gloss enamel black.	m ²	6		
8	Replace (3) three old cubicle doors, paint with (2) two coats wood primer and gloss brilliant white final coat 2032x813.	m ²	27		
9	Repaint plumbing pipes with gloss enamel cream.	m ²	3		
10	Repaint walls above wall tiles with Ivory Lace /gloss enamel cream.	m ²	25		
11	Replace and Varnish new main entrance internal door, 40 mm semi-solid walnut (2) two coats clear (egg shell) vanish 2032x813mm.	m ²	9		
<u>TILING</u>					
NOTES: The Tenderer is advised to refer to the Model Trade Preambles before pricing this Bill.					
<u>SUPPLEMENTARY PREAMBLES</u>					
Description of tiles shall be deemed to include straight and splayed cutting and waste.					
<u>Demolitions and Fixing</u>					
Ceramic wall and floor tiles delivered to site, fixed with TAL adhesive to plaster and flush pointed with tinted waterproofing jointing compound 600mm x 600mm x 8.6mm Thick Porcelain tiles includes delivery to site, add waste, laying and fixing.					
CARRIED TO COLLECTION		R			
Section No. 2					
Bill No. 8					
Alterations and Renovations of G001 Female Bathroom					

12	Remove existing floor tiles and replace with new 600x600mm with full body tile adhesive, black Porcelain tiles on floors and skirting 600x100mm.	m ²	80		
13	Remove existing wall tiles and replace with new 300x600mm with full body tile adhesive, white Porcelain tiles on walls and narrow width.	m ²	45		
14	Leave expansion joint and fill with grey sika flex 6x8mm dip.	m	12		
15	Install with full body tile adhesive, (1) one row of Mercury Petite boarder 300x 60mm.	m ²	16		
<u>MASONRY</u>					
<u>PREAMBLES</u>					
<u>NOTES:</u>					
The Tenderer is advised to refer to the Model Trade Preambles before pricing this Bill.					
<u>BRICKWORK</u>					
16	Construct 1m ² parapet wall 1000x550x115mm for granite top and covering of pipes. Approved common hard burn bricks size 222 x 106 x 73mm or equal approved faced both sides in stretcher bond, laid in class (3) three cement mortar and plastered.	m ²	10		
<u>FITTINGS / ACCESSORIES</u>					
<u>PREAMBLES</u>					
<u>NOTES:</u>					
The Tenderer is advised to refer to the Model Trade Preambles before pricing this Bill.					
<u>Demolitions and Fixing</u>					
17	Replace main entrance door aluminium wear plate 150x820mm, return spring and PVC / aluminium door relief vent 600x150mm.	No	1		
18	Replace new pictogram.	No	1		
19	Remove and Install mirror 4000x950mm.	No	1		
20	Install new Cubicle union chrome bolt indicators.	No	3		
CARRIED TO COLLECTION		R			
Section No. 2					
Bill No. 8					
Alterations and Renovations of G001 Female Bathroom					

21	Remove and install new 1x1m Chromium plated towel rail.	No	1		
22	Install new Granite Top white 4000 x550mm, vertical front 4000 x250mm, new vertical sides 2x600x250mm and skirting 4000x80mm.	No	1		
23	Install new aluminium door handle for main entrance to match existing. SABS approved.	No	1		
24	Remove and Install new light fitting.	No	1		
25	Install new under basin 10lts Kwikot instant prisma delux heater 1500w.	No	1		
CARRIED TO COLLECTION		R			
Section No. 2					
Bill No. 8					
Alterations and Renovations of G001 Female Bathroom					

<p>Section No 2 Alterations and Renovations Bill No. 8 Alterations and Renovations of G001 Female Bathroom</p> <p>COLLECTION</p> <p>Total BROUGHT FORWARD from Page No. -2/- -2/72- -2/73- -2/74- -2/75-</p> <p style="text-align: center;">CARRIED TO GENERAL SUMMARY</p> <p>Section No. 2 Bill No. 8 Alterations and Renovations of G001 Female Bathroom</p>				
	R			

BILL No 9				
ALTERATIONS AND RENOVATIONS				
G100 FEMALE BATHROOM				
PLUMBING				
PREAMBLES				
NOTES:				
The Tenderer is advised to refer to the Model Trade Preambles before pricing this Bill uPVC pipes and fittings: Sewer and drainage pipes and fittings shall be jointed and sealed with butyl rubber rings uPVC pressure pipes and fittings: Pipes for water supply shall be of the class stated.				
Demolitions and Fixing				
Taking out and removing piping, sanitary fittings, etc including disconnecting piping from fittings and making good floor and wall finishes (making good tiling and paintwork elsewhere).				
1	Remove existing toilet pans and replace with new white ceramic toilet pans.		8	
2	Remove existing flush masters and replace with new FM1000 chromium plated flush master.	No	8	
3	Remove existing hand wash basins and replace with drop in white ceramic hand basin 580x485x200mm.	No	5	
4	Remove existing water taps and replace with new 15mm chromium plated square basin sink mixer.	No	5	
5	Hand basins to be connected to existing 50mm drainage with 40x40mm 'S' or 'P' trap.	No	5	
CARRIED TO COLLECTION		R		
Section No. 2				
Bill No. 9				
Alterations and Renovations of G100 Female Bathroom				

<u>PAINTING</u>					
<u>PREAMBLES</u>					
<u>NOTES:</u>					
The Tenderer is advised to refer to the Model Trade Preambles before pricing this Bill.					
<u>PAINTWORK ETC TO NEW WORK</u>					
<u>Demolitions and Fixing</u>					
6	Repaint ceiling with (1) one coat primer and PVA acrylic matt brilliant white final coat.	m ²	60		
7	Sand and repaint with (2) two coats, cubicle wooden styles & heads with gloss enamel black.	m ²	12		
8	Replace (3) three old cubicle doors, paint with (2) two coats wood primer and gloss brilliant white final coat 2032x813.	m ²	72		
9	Repaint plumbing pipes with gloss enamel cream.	m ²	8		
10	Repaint walls above wall tiles with Ivory Lace /gloss enamel cream.	m ²	66		
11	Replace and Varnish new main entrance internal door, 40 mm semi-solid walnut (2) two coats clear (egg shell) vanish 2032x813mm.	m ²	9		
<u>TILING</u>					
NOTES: The Tenderer is advised to refer to the Model Trade Preambles before pricing this Bill.					
<u>SUPPLEMENTARY PREAMBLES</u>					
Description of tiles shall be deemed to include straight and splayed cutting and waste.					
<u>Demolitions and Fixing</u>					
Ceramic wall and floor tiles delivered to site, fixed with TAL adhesive to plaster and flush pointed with tinted waterproofing jointing compound 600mm x 600mm x 8.6mm Thick Porcelain tiles includes delivery to site, add waste, laying and fixing.					
CARRIED TO COLLECTION		R			
Section No. 2					
Bill No. 9					
Alterations and Renovations of G100 Female Bathroom					

12	Remove existing floor tiles and replace with new 600x600mm with full body tile adhesive, black Porcelain tiles on floors and skirting 600x100mm.	m ²	80		
13	Remove existing wall tiles and replace with new 300x600mm with full body tile adhesive, white Porcelain tiles on walls and narrow width.	m ²	45		
14	Leave expansion joint and fill with grey sika flex 6x8mm dip.	m	12		
15	Install with full body tile adhesive, (1) one row of Mercury Petite boarder 300x 60mm.	m ²	16		
<u>MASONRY</u>					
<u>PREAMBLES</u>					
<u>NOTES:</u>					
The Tenderer is advised to refer to the Model Trade Preambles before pricing this Bill.					
<u>BRICKWORK</u>					
16	Construct 1m ² parapet wall 1000x550x115mm for granite top and covering of pipes. Approved common hard burn bricks size 222 x 106 x 73mm or equal approved faced both sides in stretcher bond, laid in class (3) three cement mortar and plastered.	m ²	10		
<u>FITTINGS / ACCESSORIES</u>					
<u>PREAMBLES</u>					
<u>NOTES:</u>					
The Tenderer is advised to refer to the Model Trade Preambles before pricing this Bill.					
<u>Demolitions and Fixing</u>					
17	Replace main entrance door aluminium wear plate 150x820mm, return spring and PVC / aluminium door relief vent 600x150mm.	No	1		
18	Replace new pictogram.	No	1		
19	Remove and Install mirror 5000x950mm.	No	1		
20	Install new Cubicle union chrome bolt indicators.	No	8		
CARRIED TO COLLECTION		R			
Section No. 2					
Bill No. 9					
Alterations and Renovations of G100 Female Bathroom					

21	Remove and install new 1x1m Chromium plated towel rail.	No	1		
22	Install new Granite Top white 5000 x550mm, vertical front 5000 x250mm, new vertical sides 2x600x250mm and skirting 5000x80mm.	No	1		
23	Install new aluminium door handle for main entrance to match existing. SABS approved.	No	1		
24	Remove and Install new light fitting.	No	1		
25	Install new under basin 10lts Kwikot instant prisma delux heater 1500w.	No	1		
CARRIED TO COLLECTION		R			
Section No. 2					
Bill No. 9					
Alterations and Renovations of G100 Female Bathroom					

<p>Section No 2 Alterations and Renovations Bill No. 9 Alterations and Renovations of G100 Female Bathroom COLLECTION Total BROUGHT FORWARD from Page No. -2/- -2/77- -2/78- -2/89- -2/80-</p> <p style="text-align: center;">CARRIED TO GENERAL SUMMARY</p> <p>Section No. 2 Bill No. 9 Alterations and Renovations of G100 Female Bathroom</p>				
	R			

BILL No 10				
ALTERATIONS AND RENOVATIONS				
G001B GENTS BATHROOM				
PLUMBING				
PREAMBLES				
NOTES:				
The Tenderer is advised to refer to the Model Trade Preambles before pricing this Bill uPVC pipes and fittings: Sewer and drainage pipes and fittings shall be jointed and sealed with butyl rubber rings uPVC pressure pipes and fittings: Pipes for water supply shall be of the class stated.				
Demolitions and Fixing				
Taking out and removing piping, sanitary fittings, etc including disconnecting piping from fittings and making good floor and wall finishes (making good tiling and paintwork elsewhere).				
1	Remove existing toilet pans and replace with new ceramic white toilet pan.	No	2	
2	Remove existing urinals and replace with new white ceramic white urinal.	No	1	
3	Remove existing flush masters and replace with new FM1000 chromium plated flush master for toilets.	No	2	
4	Remove existing flush masters and replace with new FJ 6000 chromium plated junior flush master for urinals.	No	1	
5	Remove existing hand wash basin and replace with drop in white hand basin 580x485x200mm.	No	2	
6	Remove existing water tap and replace with new 15mm chromium plated square basin sink mixer.	No	2	
7	Hand basins to be connected to existing 50mm drainage with 40x40mm 'S' or 'P' trap.	No	2	
CARRIED TO COLLECTION		R		
Section No. 2				
Bill No. 10				
Alterations and Renovations of G001B Male Bathroom				

<u>PAINTING</u>					
<u>PREAMBLES</u>					
<u>NOTES:</u>					
The Tenderer is advised to refer to the Model Trade Preambles before pricing this Bill.					
<u>PAINTWORK ETC TO NEW WORK</u>					
<u>Demolitions and Fixing</u>					
8	Repaint ceiling with (1) one coat primer and PVA acrylic matt brilliant white final coat.	m ²	15		
9	Sand and repaint cubicle wooden styles & heads with (2) coats gloss enamel black.	m ²	4		
10	Replace (2) two old cubicle doors, paint with (2) two coats wood primer and Gloss brilliant white final coat 2032x813mm.	m ²	9		
11	Repaint plumbing pipes with gloss enamel cream.	m ²	1		
12	Repaint walls above wall tiles with Ivory Lace /Gloss enamel cream.	m ²	25		
13	Replace and Varnish new main entrance internal door, 40 mm semi-solid walnut (2) two coats clear (egg shell) vanish 2032x813mm.	m ²	9		
<u>TILING</u>					
NOTES: The Tenderer is advised to refer to the Model Trade Preambles before pricing this Bill.					
<u>SUPPLEMENTARY PREAMBLES</u>					
Description of tiles shall be deemed to include straight and splayed cutting and waste.					
<u>Demolitions and Fixing</u>					
Ceramic wall and floor tiles delivered to site, fixed with TAL adhesive to plaster and flush pointed with tinted waterproofing jointing compound 600mm x 600mm x 8.6mm Thick Porcelain tiles includes delivery to site, add waste, laying and fixing.					
CARRIED TO COLLECTION		R			
Section No. 2					
Bill No. 10					
Alterations and Renovations of G001B Male Bathroom					

14	Remove existing floor tiles and replace with new 600x600mm with full body tile adhesive, black Porcelain tiles, on floors and skirting 600x100mm.	m ²	30		
15	Remove existing wall tiles and replace with new 300x600mm with full body tile adhesive, white Porcelain tiles on walls including narrow width.	m ²	25		
16	Leave expansion joint and fill neatly with grey sika flex 6x8mm dip.	m	12		
17	Install with full body tile adhesive, (1) one row of Mercury Petite boarder 300x 60mm.	m ²	8		
	<u>MASONRY</u>				
	<u>PREAMBLES</u>				
	<u>NOTES:</u>				
	The Tenderer is advised to refer to the Model Trade Preambles before pricing this Bill.				
	<u>BRICKWORK</u>				
18	Construct 1m ² parapet wall 1000x550x115mm for granite top and covering of pipes. Approved common hard burn bricks size 222 x 106 x 73mm or equal approved faced both sides in stretcher bond, laid in class (3) three cement mortar and plastered.	m ²	2		
	<u>FITTINGS / ACCESSORIES</u>				
	<u>PREAMBLES</u>				
	<u>NOTES:</u>				
	The Tenderer is advised to refer to the Model Trade Preambles before pricing this Bill.				
	<u>Demolitions and Fixing</u>				
19	Replace main entrance door aluminium wear plate 150x820mm, return spring and PVC / aluminium door relief vent 600x150mm.	No	1		
20	Replace new pictogram.	No	1		
	Remove and Install mirror 1200x900mm.	No	1		
21					
	CARRIED TO COLLECTION	R			
	Section No. 2 Bill No. 10 Alterations and Renovations of G001B Male Bathroom				

22	Install new Cubicle union chrome bolt indicators.	No	2		
23	Install new Granite Top white 1500 x550mm, vertical front 1500 x250mm, new vertical sides 2x600x250mm and skirting 1500x80mm.	No	1		
24	Install aluminium handle for main entrance, to match the existing. SABS approved.	No	1		
25	Remove and Install new light fitting.	No	1		
26	Install new under basin 10lts Kwikot instant prisma delux heater 1500w.	No	1		
CARRIED TO COLLECTION					
Section No. 2					
Bill No. 10					
Alterations and Renovations of G001B Male Bathroom					

<p>Section No 2 Alterations and Renovations Bill No. 10 Alterations and Renovations of G001B Male Bathroom</p> <p>COLLECTION</p> <p>Total BROUGHT FORWARD from Page No.</p> <p>-2/82- -2/83- -2/84- -2/85-</p> <p style="text-align: center;">CARRIED TO GENERAL SUMMARY</p> <p>Section No. 2 Bill No. 10 Alterations and Renovations of G001B Male Bathroom</p>				
------------------------------------------------------------------------------------------------------------------------------------------------------------------------------------------------------------------------------------------------------------------------------------------------------------------------------------------------------------------------------------------------------------------------	--	--	--	--

BILL No 11

ALTERATIONS AND RENOVATIONS

KITCHEN E201

Floor cabinet on plan 3700mm long overall x 600mm deep x 900mm high of white melamine inside shelving and finishes, melawood mahogany doors with PVC edges, supawood kick plate (for tile skirting by others) aluminium handles, heavy duty drawer sliders and 32mm Rustenburg black granite top with bull nosed edge and with hole cut for and including Franke Trendline 721 DEB sink and with hole cut for mixer (supplied and fitted).

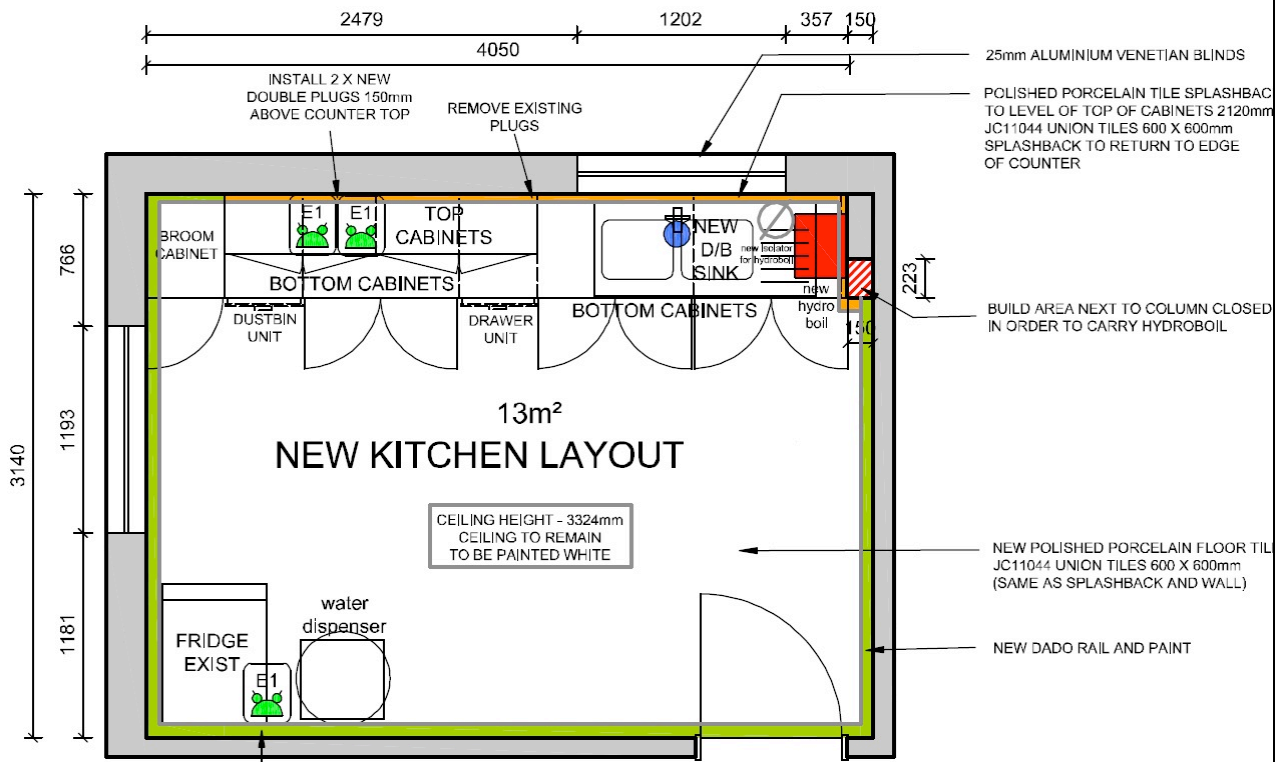
Item 1

Wall cabinet 1650mm long x 400mm deep x 900mm high of white melamine inside shelving and finishes, melawood mahogany doors with PVC edges, aluminium handles.

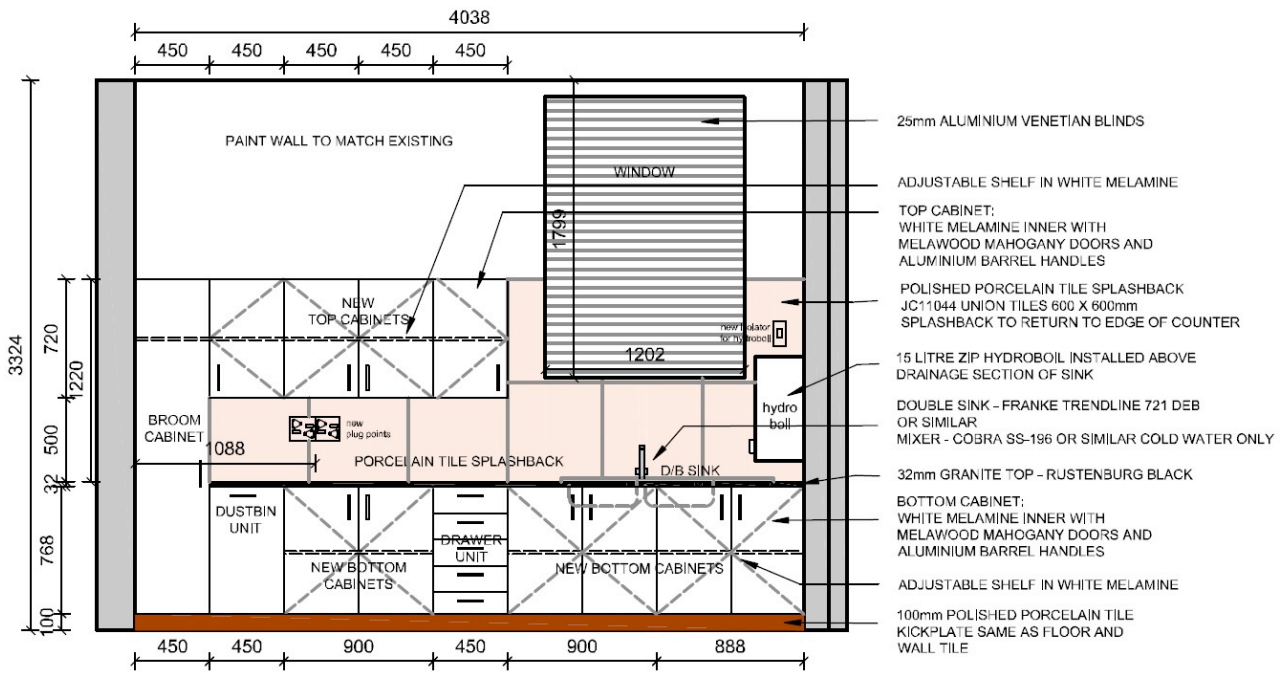
Item 1

Broom cabinet 380mm wide x 600mm deep x 2100mm high of white melamine inside shelving and finishes, melawood mahogany doors with PVC edges, supawood kickplate (for tile skirting by others) aluminium handles.

Item 1



KITCHEN FLOOR PLAN



ELEVATION

CARRIED TO GENERAL SUMMARY

R

Section No. 2

Bill No. 11

Alterations and Renovations of E201 Kitchen

BILL No 12

ALTERATIONS AND RENOVATIONS

KITCHEN G102

Floor cabinet on plan 2100mm long overall x 600mm deep x 900mm high of white melamine inside shelving and finishes, melawood mahogany doors with PVC edges, supawood kick plate (for tile skirting by others) aluminium handles, heavy duty drawer sliders and 32mm Rustenburg black granite top with bull nosed edge and with hole cut for and including Franke Trendline 721 DEB sink and with hole cut for mixer (supplied and fitted).

Item 1

Wall cabinet 1650mm long x 400mm deep x 900mm high of white melamine inside shelving and finishes, melawood mahogany doors with PVC edges, aluminium handles.

Item 1

CARRIED TO GENERAL SUMMARY

R

BILL No 13

ALTERATIONS AND RENOVATIONS

KITCHEN B202

Floor cabinet on plan 3700mm long overall x 600mm deep x 900mm high of white melamine inside shelving and finishes, melawood mahogany doors with PVC edges, supawood kick plate (for tile skirting by others) aluminium handles, heavy duty drawer sliders and 32mm Rustenburg black granite top with bull nosed edge and with hole cut for and including Franke Trendline 721 DEB sink and with hole cut for mixer (supplied and fitted).

Item

1

Wall cabinet 1650mm long x 400mm deep x 900mm high of white melamine inside shelving and finishes, melawood mahogany doors with PVC edges, aluminium handles.

Item

1

Broom cabinet 380mm wide x 600mm deep x 2100mm high of white melamine inside shelving and finishes, melawood mahogany doors with PVC edges, supawood kickplate (for tile skirting by others) aluminium handles.

Item

1

Section No. 2

Bill No. 13

Alterations and Renovations of B202 Kitchen

BILL No 14

ALTERATIONS AND RENOVATIONS

KITCHEN C201

Floor cabinet on plan 3700mm long overall x 600mm deep x 900mm high of white melamine inside shelving and finishes, melawood mahogany doors with PVC edges, supawood kick plate (for tile skirting by others) aluminium handles, heavy duty drawer sliders and 32mm Rustenburg black granite top with bull nosed edge and with hole cut for and including Franke Trendline 721 DEB sink and with hole cut for mixer (supplied and fitted).

Item 1

Wall cabinet 1650mm long x 400mm deep x 900mm high of white melamine inside shelving and finishes, melawood mahogany doors with PVC edges, aluminium handles.

Item 1

Broom cabinet 380mm wide x 600mm deep x 2100mm high of white melamine inside shelving and finishes, melawood mahogany doors with PVC edges, supawood kickplate (for tile skirting by others) aluminium handles.

Item 1

Section No. 2

Bill No. 14

Alterations and Renovations of C201 Kitchen

BILL No 15

ALTERATIONS AND RENOVATIONS

KITCHEN E201

Floor cabinet on plan 3700mm long overall x 600mm deep x 900mm high of white melamine inside shelving and finishes, melawood mahogany doors with PVC edges, supawood kick plate (for tile skirting by others) aluminium handles, heavy duty drawer sliders and 32mm Rustenburg black granite top with bull nosed edge and with hole cut for and including Franke Trendline 721 DEB sink and with hole cut for mixer (supplied and fitted).

Item

1

Wall cabinet 1650mm long x 400mm deep x 900mm high of white melamine inside shelving and finishes, melawood mahogany doors with PVC edges, aluminium handles.

Item

1

Broom cabinet 380mm wide x 600mm deep x 2100mm high of white melamine inside shelving and finishes, melawood mahogany doors with PVC edges, supawood kickplate (for tile skirting by others) aluminium handles.

Item

1

Section No. 2

Bill No. 15

Alterations and Renovations of E201 Kitchen

BILL No 16

ALTERATIONS AND RENOVATIONS

KITCHEN C126

Floor cabinet on plan 3700mm long overall x 600mm deep x 900mm high of white melamine inside shelving and finishes, melawood mahogany doors with PVC edges, supawood kick plate (for tile skirting by others) aluminium handles, heavy duty drawer sliders and 32mm Rustenburg black granite top with bull nosed edge and with hole cut for and including Franke Trendline 721 DEB sink and with hole cut for mixer (supplied and fitted).

Item

1

Wall cabinet 1650mm long x 400mm deep x 900mm high of white melamine inside shelving and finishes, melawood mahogany doors with PVC edges, aluminium handles.

Item

1

Broom cabinet 380mm wide x 600mm deep x 2100mm high of white melamine inside shelving and finishes, melawood mahogany doors with PVC edges, supawood kickplate (for tile skirting by others) aluminium handles.

Item

1

Section No. 2

Bill No. 16

Alterations and Renovations of C126 Kitchen

BILL No 17

ALTERATIONS AND RENOVATIONS

KITCHEN BATELEUR

Floor cabinet on plan 3700mm long overall x 600mm deep x 900mm high of white melamine inside shelving and finishes, melawood mahogany doors with PVC edges, supawood kick plate (for tile skirting by others) aluminium handles, heavy duty drawer sliders and 32mm Rustenburg black granite top with bull nosed edge and with hole cut for and including Franke Trendline 721 DEB sink and with hole cut for mixer (supplied and fitted).

Item

1

Wall cabinet 1650mm long x 400mm deep x 900mm high of white melamine inside shelving and finishes, melawood mahogany doors with PVC edges, aluminium handles.

Item

1

Broom cabinet 380mm wide x 600mm deep x 2100mm high of white melamine inside shelving and finishes, melawood mahogany doors with PVC edges, supawood kickplate (for tile skirting by others) aluminium handles.

Item

1

Section No. 2

Bill No. 17

Alterations and Renovations of BATELUER Kitchen

BILL No 18			
ALTERATIONS AND RENOVATIONS			
PARAPLEGIC BATHROOMS			
NOTES:			
The Tenderer is advised to refer to the Model Trade Preambles before pricing this Bill uPVC pipes and fittings: Sewer and drainage pipes and fittings shall be jointed and sealed with butyl rubber rings uPVC pressure pipes and fittings: Pipes for water supply shall be of the class stated.			
Demolitions and Fixing			
Taking out and removing piping, sanitary fittings, etc including disconnecting piping from fittings and making good floor and wall finishes (making good tiling and paintwork elsewhere).			
1	Remove existing toilet pan and replace with new Vaal Sanitaryware Orchid Paraplegic vitreous china wall hung paraplegic back inlet washdown suite colour White (code: 439016) fixed on and including floor bracket (code: 8082Z0) comprising 90° outlet open rim pan, back inlet (code: 439016), 9 litre cistern (code: 710539), including lid, fittings and purpose-made double flap wooden seat (code: 8520Z0)		1
2	Remove existing flush masters and replace with new FM1000 chromium plated flush master.	No	1
3	Remove existing hand wash basins and replace Vaal Sanitaryware Weaver vitreous china sit-on vanity basin colour White (code: 70420101), size 570 x 450mm with one taphole, fitted onto vanity top	No	1
4	Remove existing water taps and replace with new 15mm chromium plated PARAPLEGIC basin sink mixer.	No	1
5	Hand basins to be connected to existing 50mm drainage with 40x40mm 'S' or 'P' trap.	No	1
CARRIED TO COLLECTION			

<p>Section No. 2 Bill No. 18 Alterations and Renovations of PARAPLEGIC Bathrooms</p> <p><u>PAINTING</u></p> <p><u>PREAMBLES</u></p> <p><u>NOTES:</u></p> <p>The Tenderer is advised to refer to the Model Trade Preambles before pricing this Bill.</p> <p><u>PAINTWORK ETC TO NEW WORK</u></p> <p><u>Demolitions and Fixing</u></p> <p>6 Repaint ceiling with (1) one coat primer and PVA acrylic matt brilliant white final coat.</p> <p>7 Sand and repaint with (2) two coats, cubicle wooden styles & heads with gloss enamel black.</p> <p>8 Replace (1) one old doors, paint with (2) two coats wood primer and gloss brilliant white final coat 2032x914.</p> <p>9 Repaint plumbing pipes with gloss enamel cream.</p> <p>10 Repaint walls above wall tiles with Ivory Lace /gloss enamel cream.</p> <p><u>TILING</u></p> <p>NOTES: The Tenderer is advised to refer to the Model Trade Preambles before pricing this Bill.</p> <p><u>SUPPLEMENTARY PREAMBLES</u></p> <p>Description of tiles shall be deemed to include straight and splayed cutting and waste.</p> <p><u>Demolitions and Fixing</u></p> <p>Ceramic wall and floor tiles delivered to site, fixed with TAL adhesive to plaster and flush pointed with tinted waterproofing jointing compound 600mm x 600mm x 8.6mm Thick Porcelain tiles includes delivery to site, add waste, laying and fixing.</p> <p style="text-align: center;">CARRIED TO COLLECTION</p> <p>Section No. 2 Bill No. 18 Alterations and Renovations of PARAPLEGIC Bathrooms</p>	<p style="text-align: center;">R</p> <p style="text-align: center;">m²</p> <p style="text-align: center;">m²</p> <p style="text-align: center;">m²</p> <p style="text-align: center;">m²</p> <p style="text-align: center;">m²</p> <p style="text-align: center;">m²</p> <p style="text-align: center;">m²</p> <p style="text-align: center;">R</p>	<p style="text-align: center;">6</p> <p style="text-align: center;">6</p> <p style="text-align: center;">9</p> <p style="text-align: center;">3</p> <p style="text-align: center;">25</p>			
-----------------------------------------------------------------------------------------------------------------------------------------------------------------------------------------------------------------------------------------------------------------------------------------------------------------------------------------------------------------------------------------------------------------------------------------------------------------------------------------------------------------------------------------------------------------------------------------------------------------------------------------------------------------------------------------------------------------------------------------------------------------------------------------------------------------------------------------------------------------------------------------------------------------------------------------------------------------------------------------------------------------------------------------------------------------------------------------------------------------------------------------------------------------------------------------------------------------------------------------------------------------------------------------------------------------------------------------------------------------------------------------------------------------------------------------------------------------------------------------------------------------------------------------------------------------------------------------------------------------------	------------------------------------------------------------------------------------------------------------------------------------------------------------------------------------------------------------------------------------------------------------------------------------------------------------------------------------------------------------------------------------------------------------------------------------------------	-------------------------------------------------------------------------------------------------------------------------------------------------------------------------------------------	--	--	--

11	Remove existing floor tiles and replace with new 600x600mm with full body tile adhesive, black Porcelain tiles on floors and skirting 600x100mm.	m ²	10		
12	Remove existing wall tiles and replace with new 300x600mm with full body tile adhesive, white Porcelain tiles on walls and narrow width.	m ²	30		
13	Leave expansion joint and fill with grey sika flex 6x8mm dip.	m	12		
14	Install with full body tile adhesive, (1) one row of Mercury Petite boarder 300x 60mm.	m ²	16		
<u>MASONRY</u>					
<u>PREAMBLES</u>					
<u>NOTES:</u>					
The Tenderer is advised to refer to the Model Trade Preambles before pricing this Bill.					
<u>FITTINGS / ACCESSORIES</u>					
<u>PREAMBLES</u>					
<u>NOTES:</u>					
The Tenderer is advised to refer to the Model Trade Preambles before pricing this Bill.					
<u>Demolitions and Fixing</u>					
15	Replace main entrance door aluminium wear plate 150x820mm, return spring and PVC / aluminium door relief vent 600x150mm.	No	1		
16	Replace new pictogram.	No	1		
17	Remove and Install mirror 4000x950mm.	No	1		
	Install new Cubicle union chrome bolt indicators.	No	1		
CARRIED TO COLLECTION		R			
Section No. 2					
Bill No. 18					
Alterations and Renovations of PARAPLEGIC Bathrooms					

18	Remove and install new 1x1m Chromium plated towel rail.	No	1		
19	Install new Franke CNTX 700 A Grade 304 32mm diameter 18/10 stainless steel angle bars with Franke fine grip (product code: 359877), size 256 x 618 x 95mm deep, plugged and screwed to the wall with stainless steel screws	No	1		
20	Install new aluminium door handle for main entrance to match existing. SABS approved.	No	1		
21	Remove and Install new light fitting.	No	1		
	Install new under basin 10lts Kwikot instant prisma delux heater 1500w.	No	1		
22	Install new Franke CNTX750 Grade 304 18/10 stainless steel 32mm diameter straight grab rail with Franke fine grip (Code: 359874) 750mm x 95mm deep, plugged and screwed to the wall with stainless steel screws.	No	1		
CARRIED TO COLLECTION		R			
Section No. 2					
Bill No. 18					
Alterations and Renovations of PARAPLEGIC Bathrooms					

	<p>Section No 2 Alterations and Renovations Bill No. 18 Alterations and Renovations of PARAPLEGIC Bathrooms COLLECTION Total BROUGHT FORWARD from Page No. -2/- -2/95- -2/96- -2/97- -2/98-</p> <p style="text-align: center;">CARRIED TO GENERAL SUMMARY</p> <p>Section No. 2 Bill No. 18 Alterations and Renovations of PARAPLEGIC Bathrooms</p>				
		R			

	BILL No 19 PROVISIONAL SUMS ALTERATIONS AND RENOVATIONS DIRECT CONTRACTS, PROVISIONAL SUMS , PC SUMS AND BUDGETARY ALLOWANCES.				
	BILL NO. 19 NOTES: The Tenderer is advised to refer to the Model Trade Preambles before pricing this Bill Unless otherwise described the Preamble and full descriptions of the items in the previous Sections are to apply equally to this Section Note: All provisional Sums are NETT ie. there is no cash discount. The following amounts are for work to be carried out by nominated sub-contractors.				
A	ELECTRICAL INSTALLATIONS Allow the amount of R20,000.00 (Nett) (Twenty Thousand Rands) for electrical Installations		Item		20 000
B	JOINERY/ WOOD Provide the Provisional Amount of R 15,000 00 (Fifteen Thousand Rand) for repairing wooden; window frames, door frames, cubicles door frames and accessories.		Item		15 000
C	SANITARY FITTINGS Provide the Provisional Amount R 20,000 00 (Twenty Thousand for supply and installation of ceramic basin. CONTINGENCIES		Item		20 000
D	Allow the budgetary amount of R20,000 00 (Twenty Thousand Rand) for contingencies to be used as directed by the project Manager and deducted in whole, or in part, if not required.		Item		20 000
	CARRIED TO GENERAL SUMMARY	R			75 000
	Section No. 2 Bill No. 19 Provisional Sums and Budgetary Allowances				

	BILL No 20				
	SECTION 3				
	ALTERATIONS AND RENOVATIONS				
	BILL NO. 20				
	Section 3 Summary				
Bill No	BATHROOMS				
1	D100				
2	C113				
3	C114				
4	E004				
5	C106				
6	E102				
7	F103				
8	G001				
9	G100				
10	G001				
	KITCHENS				
11	E201				
12	G102				
13	B202				
14	C201				
15	E201				
16	C126				
17	Bateleur				
18	Paraplegic Bathrooms				
19	Provisional Sum				
	GENERAL SUMMARY				R

NOTES: The quantities provided in the RFP are estimates and subject to final measurements on site.

Item No.	Evaluation Criteria Item 90/10 Principle	Weight
A	<p>Phase 1: Administrative compliance:</p> <p>Fully comply with specification and requirements.</p> <ul style="list-style-type: none"> • SARS Tax status certificate with PIN number • Completed SBD 3.1;(Pricing proposal) • Completed SBD 4; • Completed SBD 6.1; • Completed SBD 8; • Completed SBD 9; • Technical Response (which includes: company profile, track record and previous experience, capacity and capability) <p>Minimum qualifications CIDB Grading 3GB/ PE</p> <p>All SBD forms stated above should be completed in full signed and dated by an authorised representative of the bidder</p>	
B	PRICE (Phase 2)	90
C	B-BBEE Status Level of Contributor	10
	Total	100
D	Functionality(Phase 3)	
	<ol style="list-style-type: none"> 1. Track Record and Experience - Proven experience on similar turnkey projects with reference letters from previous and current contactable clients. 40 2. Capacity - Project Management (Supported by a detailed project plan and a written narrative and/or a method statement). 40 3. Capability - Relevant Skills and Experience in construction industry which includes construction/civil, electrical and air-conditioning services. 10 4. Technical Approach - Temporary Access control plan during construction. The plan must include the security plan during the construction as well as how will you comply to OHS requirements 10 <p>NB Minimum 65% qualifications on functionality</p>	
	Sub-total	100
	B-BBEE Status level	10
	Sub total	10
	Total	100